



DUBLIN



TORONTO



LONDON



EDINBURGH



OXFORD



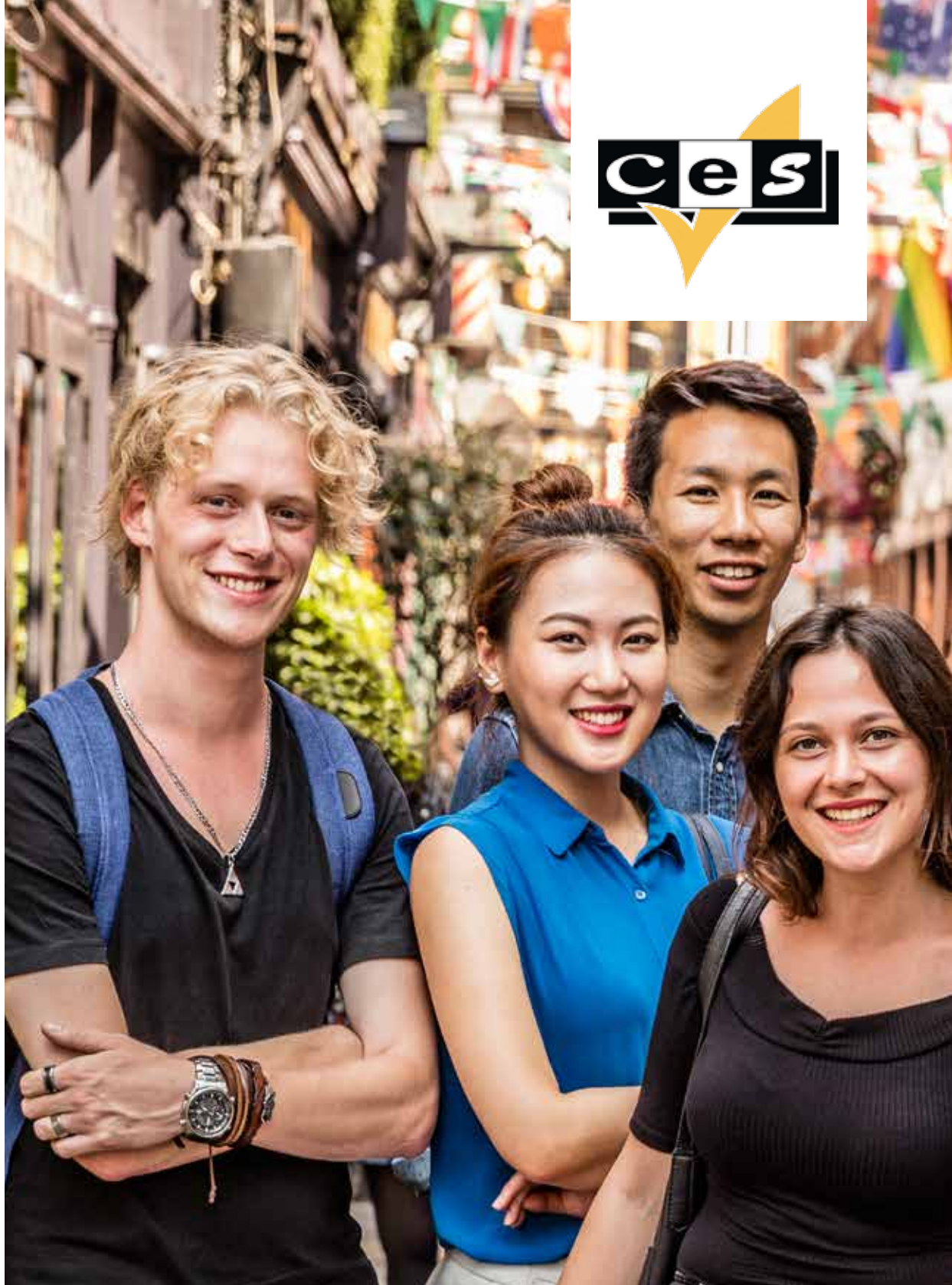
LEEDS



WORTHING



HARROGATE



Centre of **English Studies**

ADULT BROCHURE

& DESTINATIONS...ENDLESS POSSIBILITIES



As Managing Director of Centre of English Studies (CES), it gives me great pleasure to introduce you to our adult course brochure for Ireland, the UK & Canada.

Our brochure will give you detailed information about all of our locations, our 8 year round adult centres, and our wide range of language courses.

For more than 40 years, Centre of English Studies has welcomed thousands of students from over 85 different countries who come to CES to improve their English and discover a little more about our culture and people.

Our aim in CES is to provide you with the best possible language programme and to help you improve your accuracy, fluency and confidence, thereby allowing you to meet your future needs and targets.

Everyone in CES is looking forward to welcoming you to CES and to helping you achieve your language goals.

Justin Quinn
Managing Director

Welcome to



“History and Recognition”

Founded in 1979 on the North side of Dublin Ireland, CES has today grown into an international language school with 8 year round centres in Ireland, England, Scotland and Canada. We use our over 40 years’ experience and expertise to teach the English language to students from across the globe.

CES is a family run language school. We are proud of our history and of all the students who have studied with us, and are always eager to welcome new students to one of our schools.

All of our teachers in Ireland hold a university degree plus an ACELS recognised teaching qualification. In Canada all of our teachers are degree qualified and TESL Canada certified.

In the UK, all teachers have the Trinity TESOL Certificate, CELTA or other recognised teaching qualifications, with many holding specialist EFL teaching diplomas and degrees.

Across all of our schools in Ireland, UK and Canada, our teachers are chosen not only for their experience, but also for their enthusiasm, positive attitude and ability to make language learning fun!

All CES schools offer homestay accommodation and a wide variety of alternative accommodation options including residential and hotel accommodation available at select schools on request.

CES is a multi-award winning school that has been recognised by independent and external sources such as Study Travel Magazine (Worldwide), Languagecourses.Net (Worldwide), Ryugaku Journal (Japan), and UED (Turkey).

CES is recognised and accredited by the **British Council** in the **UK**, **ACELS** (the Irish Department of Education) in Ireland, and by **Languages Canada** in Canada.

CES is proud to have four year-round schools as full **EAQUALS** members.

Our CES schools in Dublin, Leeds, Harrogate and Toronto are **official IELTS and Cambridge Test Centres**. Dublin, Leeds and Harrogate are also **OET test centres** and Dublin is a **PEARSON exam centre**.

All schools also offer the **Trinity Certificate & LanguageCert Examinations**.

CES is a **IALC member school** and a **member of ALTO**.

All our schools in the UK are full members of **English UK**.



Jonathan Quinn
Marketing Director



Michael Quinn
UK Director

Our motto is **Care – Excellence – Success**

CONTENTS

» OUR CENTRES



» OUR COURSES

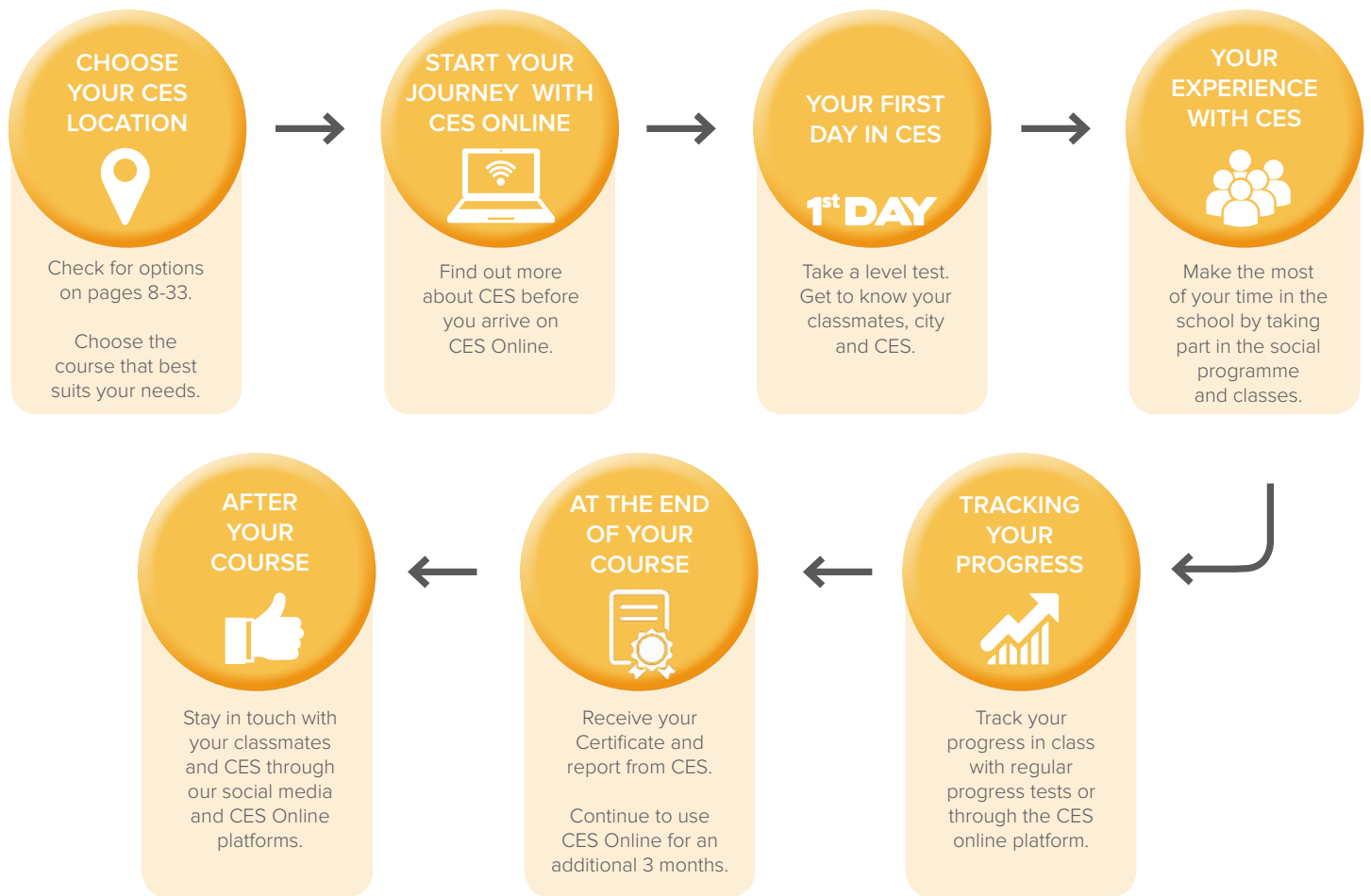
- LEVEL DESCRIPTORS 34
- STANDARD COURSE..... 35
- INTENSIVE COURSE..... 36
- COMBINATION COURSE..... 37
- GENERAL ENGLISH WITH BUSINESS..... 37
- IELTS PREPARATION 38
- CAMBRIDGE EXAM PREPARATION 39
- LONG TERM..... 40
- MULTI – DESTINATION..... 40
- PRE SESSIONAL ENGLISH PROGRAMME 41
- WORK EXPERIENCE 41
- ENGLISH AND CULTURE 50's+ PROGRAMME..... 42
- ENGLISH FOR PROFESSIONALS 42
- ENGLISH FOR TEACHERS/CLIL..... 43

» INFORMATION

- WHY CES 4
- MEMBERSHIPS AND ACCREDITATIONS 4
- YOUR JOURNEY WITH CES 5
- LIFE AT CES 6
- STUDYING AT CES..... 7



» YOUR JOURNEY TO CES



SELF-STUDY MATERIALS

Specially designed to help you progress

SOCIAL PROGRAMME

View all our upcoming social events

EXAM PRACTICE

IELTS, FCE, CAE, CPE

E-RECEPTION

Request letters and holidays

LIVING

Local information and links



Log On today...

WWW.CES-SCHOOLS.COM/LOGIN

» LIFE AT CES



On arrival at your airport of choice, CES can arrange to have you collected and transferred to your homestay or residence. The majority of our students stay in carefully selected homestays but we also provide residential self-catering accommodation in many of our centres. If you want a transfer, the CES representative will wait for you in the airport and take you directly to your accommodation.

HOMESTAY In homestay accommodation, you will probably be staying with a student from a different country. Your homestay will make you feel welcome and will provide you with clean bed linen and bathroom towels. All homestays will also provide breakfast and dinner.

REGISTRATION On your first day in any of the CES centres, we will ask you to complete a registration form. You will have an English language placement test to accurately determine your English language level and following this, a welcome talk from the centre Principal to give you more information on your centre and the city.

E-LEARNING All students get free access to CES Online, our fantastic FREE e-Learning platform, before arrival. Here you will find a wealth of materials and resources that will help your progress before, during and after your course.

SEE THE CULTURE CES arranges an exciting and varied social and cultural programme in all of our centres. Be it a visit to Buckingham Palace, a tour of Dublin Castle or a trip to Niagara Falls in Canada, there are many different options available. Whether in Ireland, the UK or Canada, the CES teams will make sure you see the best they have to offer.



» GENERAL INFO

INSURANCE Students are not insured by CES or your homestay against illness, theft or loss of personal belongings and the school accepts no responsibility in the event of these. We advise all students to take out full medical and personal insurance cover prior to departure. Students travelling from EU countries should bring their European Health Insurance card with them and students from non-EU countries must organise medical insurance. This is available on request at each school and is a visa requirement.

VISA Students from EU member countries do not need a visa to enter Ireland or the UK. Students from non-EU countries should check with their nearest embassy or consulate as a Study Visa may be required.

For further information visit:

Ireland: www.justice.ie

UK: www.ukvisas.gov.uk

Canada: www.canada.ca

COUNSELLING AND WELFARE CES have a full-time Accommodation Officer in all our schools to look after students' welfare and deal with any problems or worries that you may have.

SCHOOL HOLIDAYS The school is open throughout the year, with the exception of two weeks at Christmas. Please see our price list for course dates and national holidays.



» STUDYING AT CES

At CES, we strive to make learning the English language a memorable and fun experience. Our school locations, teaching staff and administration will ensure you can focus on improving your English Language skills in a relaxed, friendly environment.

“A unique learning experience”

NEEDS ANALYSIS

Your needs are central to the weekly planning process. Each week the teachers will discuss your needs and progress so that the plan is tailored to your requirements and you achieve your aims.

SOCIAL PROGRAMME

At CES, the social programme is designed to help you get the most out of your stay and truly experience Ireland or the UK. We offer afternoon activities, Monday to Friday, every week of the year. We also offer a selection of evening activities each week in all our centres. Throughout the year, we have full day excursions to a selection of historical sites and places of cultural interest.

SELF-ACCESS CENTRE

All CES centres offer up-to-date technology and materials for students to use at any time. There is FREE WI-FI throughout all of our centres and each centre has a dedicated computer room with free internet access and teacher assistance.

CES ONLINE LEARNING

A gateway to the school on the web, CES Online is designed to complement all of the current facilities of the school. From social programme activities to online tutorials, the system offers students remote access to the world of CES. The Front Desk App and the Grammar App allow students to access the social, administrative and educational aspects of school life from their mobile phones.

TUTORIAL

Students have regular, one-to-one tutorials with their teachers to design a personalised study plan and discuss progress and areas to work on.

CONVERSATION

These classes give you extra practice to use the new grammar and vocabulary you have gained. Your teacher will provide error correction to help you meet your learning goals.

GROUP TUITION

In our language development classes, students focus on skills such as grammar, vocabulary, pronunciation, writing and listening.

EXAM PREPARATION

CES offers a range of examination preparation courses that help you practise your exam skills and techniques. We integrate IELTS preparation with your course work in all centres and a dedicated examination centre located in our Dublin, Leeds and Harrogate schools. We also offer Cambridge preparation courses. OET, TOEIC and TOEFL preparation can be arranged on an individual basis.

UNIVERSITY GUIDANCE

Discuss how CES can guide you in your potential career path with the Director of Studies.

CES DUBLIN SAMPLE WEEKLY TIMETABLE

	MONDAY	TUESDAY	WEDNESDAY	THURSDAY	FRIDAY
9.00 - 11.00	Getting to know you – Needs Analysis and class warm-up activity	Grammar Workshop	Multimedia work in Self-Access Centre – grammar, vocabulary and pronunciation	Vocabulary development	Everyday English – phrases and techniques for everyday situations
11.00 - 11.20	COFFEE BREAK				
11.20 - 13.00	Reading and Listening – authentic materials	Team Debate – discussion of current topic	Student Project Work – Irish or UK Culture	One to one tutorial with Teacher	Revision and Weekly Progress Test
13.00 - 14.00	LUNCH BREAK				
14.00 - 16.00	Welcome Walk - orientation tour with CES teacher	OPTIONS:	OPTIONS:	OPTIONS:	EXCURSION
	Afternoon visit to the Guinness Storehouse or Dublin Castle	Conversation – practising speaking and listening or IELTS or Business Class or One-to-One Lessons	Conversation – practising speaking and listening	CV Workshop	Visit to Trinity College
	Guided Study in the Self-Access Centre		or IELTS or Business Class or One-to-One Lessons	IELTS practice	or Guided Study
	CES Online Guided e-Learning		or Business Class or One-to-One Lessons	or Business Class or One-to-One Lessons	or University Guidance
HOMEWORK	Vocabulary building	Project preparation	Grammar exercises	Revision for test	Writing

CES DUBLIN

31 Dame Street, Dublin 2, Ireland

t | +353 (0)1 671 4233

f | +353 (0)1 671 4425

e | info@ces-schools.com

w | www.ces-schools.com



» ADDITIONAL INFORMATION

16

minimum age

14

maximum per class

12

average class size

33

year round classrooms

25

computers available

DUBLIN

“Experience the warmth and heart of Europe's most welcoming city”

Our schools have the perfect location, right in the heart of the historic city of Dublin. All the main tourist attractions such as Trinity College, Dublin Castle and Temple Bar are just a few minutes' walk way. We are around the corner from Dublin's best shopping area, Grafton Street, and the beautiful and relaxing city park, St. Stephen's Green. Learn in the city of Joyce, Beckett and Wilde – a culture-rich experience for every student to enjoy.

There are few places in the world that have opened their arms to visitors and yet retained their tradition and character as well as Dublin. With such a friendly population it is no wonder that language students studying in Ireland see such progress in their confidence and fluency.

» KEY FACTS



Free WIFI



Student common room



Self access reference library



Study facilities with teacher assistance



2 x Student computer rooms



CES Café



Printing facilities



Roof top Garden



Games Room



Exam Centre

» WHY CHOOSE CES DUBLIN

- 1 Over 40 years' experience in teaching English to the world.
- 2 3 year round campuses located in the heart of Dublin city centre.
- 3 Experienced and highly qualified team of teachers and administration staff.
- 4 Wide variety of accommodation with both homestay and residential options.
- 5 Impressive range of social and cultural visits as well as in-house organised activities and free elective classes.



» STUDENT REVIEW

"Thanks to teachers and yellow shirts for making me feel part of this international family. I have enjoyed every time that we have spent together."

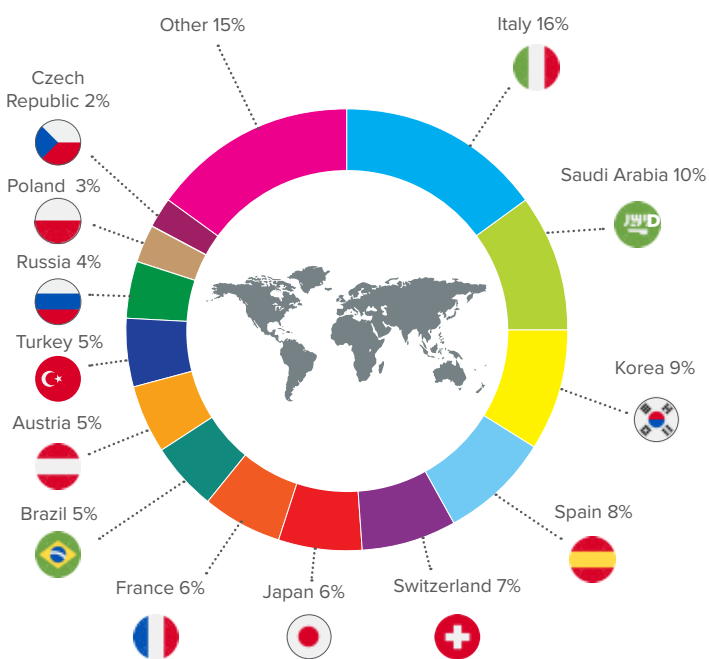
Alberto from Spain

» COURSES

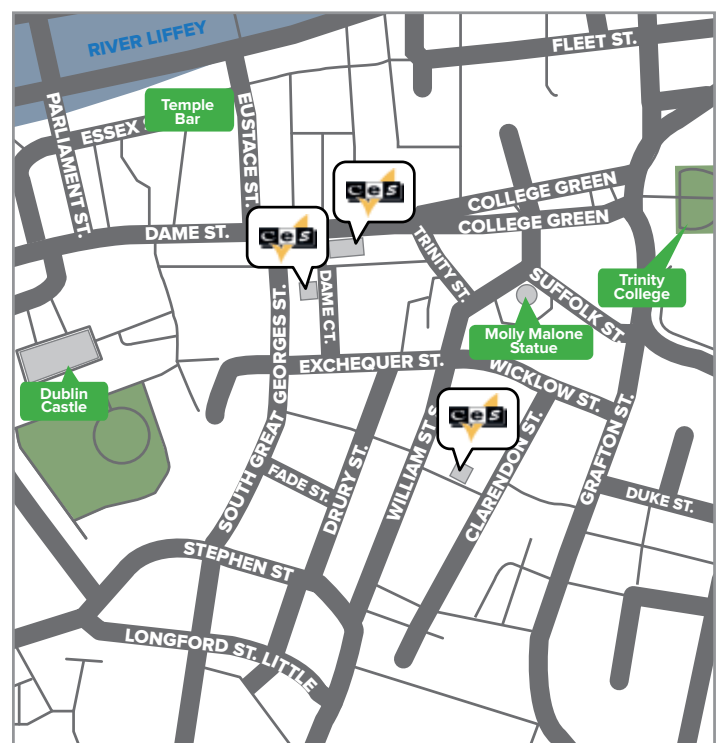
Course options for Dublin pages 34-43



» NATIONALITY MIX



» EXCELLENT CITY CENTRE LOCATION



» TOP ATTRACTIONS IN DUBLIN

TRINITY COLLEGE:

Ireland's oldest operating university with its historic campus attracts many students and tourists to experience the old and new, ever-changing Ireland.

DUBLIN CASTLE:

One of the main tourist attractions in Dublin that was initially erected on the site of a Viking Settlement. Dublin Castle has been the seat of power since the 13th Century.

TEMPLE BAR:

Since the 1980s this area of Central Dublin has developed as the heartbeat of Dublin's vibrant lifestyle.

GUINNESS STOREHOUSE:

For over 300 years Guinness has been produced in Dublin. Guinness Storehouse has become the most visited tourist attraction in Ireland.

» TRAVEL



» DISTANCE FROM CES DUBLIN

Cultural Quarter Temple Bar.....	1 min	🚶
Trinity College	3 min	🚶
Dublin Castle	3 min	🚶
Guinness Storehouse	15 min	🚶
Jameson Whiskey Distillery	15 min	🚶



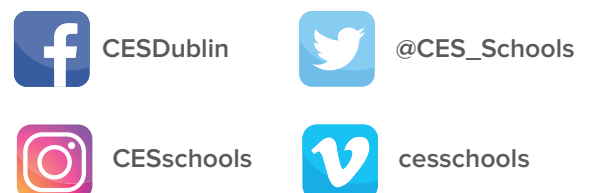
» WEEKLY SOCIAL PROGRAMME

You will have optional access to an extensive social and cultural programme for most of your afternoons and weekends. The social programme is specifically designed to help you to practice and improve your English and also learn about and see more of Ireland and Dublin.

At CES, we have a dedicated team of social coordinators, who we call our "Yellow Shirts".

Most activities include cultural visits to museums, cathedrals, world famous Guinness Storehouse or classical Trinity College. Fun things like pub nights and even greyhound racing are part of social life in Dublin. Day trips to other beautiful destinations in Ireland are also organised, allowing you to experience the whole country.

We help our students see and experience Irish culture for a truly memorable education!





» ACCOMMODATION

Dublin being the capital city offers various accommodation options. Homestay or residential accommodation types are the most popular choice for students.

One of the best ways for students to improve their spoken English is to choose homestay accommodation. Family life is informal and the people are welcoming, friendly and talkative. Homestays are carefully selected and regularly reviewed by our Accommodation Officers to ensure consistently high standards.

If you are a more independent person, residential accommodation options are also available.

Accommodation Options	Homestay	Year round Student Residence (Auburn Crestfield)	Year Round Student Residence Binary Hub	Summer Student residence
Booking options	Single or shared room	Single or twin en suite rooms	Single en suite room	Single en suite room
Meal Plans	Half board	Self-catering: kitchens are equipped with cookers, cutlery and cooking utensils.		
Travel Time (approximately)	30 - 40 minutes by public transport	25 minutes by bus	20 minutes by foot	25 minutes by bus
Other facilities	Internet access on request	WIFI access Laundry facilities	WIFI access Private gym Bike storage Laundry facilities	WIFI Access Bike storage Laundry facilities
Information	Bed linen and towels provided	Bed linen and towels provided	Bed linen and towels provided	Bed linen provided

*For accommodation fees please see CES Official Price list. ** Please note, travel times may vary due to traffic conditions.

» STUDENT REVIEW

"The residential accommodation offers a comfortable and relaxing stay with a clean room every week. It is a great option for getting to know more people."

Marcio from Switzerland



CES TORONTO

180 Bloor Street West
 Second Floor, Toronto, ON
 M5S 2V6 Canada

t | +1 416 968 1405

f | +1 416 968 6667

e | toronto@ces-schools.com

w | www.ces-schools.com



» ADDITIONAL INFORMATION

- 16 minimum age
- 16 maximum per class
- 12 average class size
- 27 year round classrooms
- 35 computers available

TORONTO NEW LOCATION

"New Location, New Experience!"

Celebrating its 40th year in 2019, CES Toronto is the newest addition to the CES family.

Located in downtown Toronto, in the heart of the prestigious Yorkville neighbourhood, CES Toronto is all about creating experiences of a lifetime! With its vibrant lifestyle, this dynamic metropolis filled with skyscrapers and many green spaces will boost your taste for adventure. An action packed destination that hosts film festivals, world-class sporting events and the choice of over 8,000 restaurants that you can sample throughout your stay. This is a great location for making new international friends, improving your speaking ability and opening up new opportunities. CES Toronto offers you helpful, customer-service focused staff, caring teachers, and a significant improvement in your English skills.

» KEY FACTS

Free WIFI	Two open plan student rooms	Table Tennis and Pool Table	Self study facilities	Student computer room
Printing facilities	Self service kitchen	Games Room	Residential accommodation	Exam Centre

» WHY CHOOSE CES TORONTO

- 1** Study in Canada's largest and most multicultural city. It is known as a safe and welcoming city for its visitors.
- 2** Incredible downtown location across from the University of Toronto and the Royal Ontario Museum.
- 3** Experienced and enthusiastic teaching staff.
- 4** Action packed destination hosting film festivals and world-class sporting events.
- 5** Chance to experience all that Canada has to offer with its beaches and natural wonder the Niagara Falls.



» STUDENT REVIEW

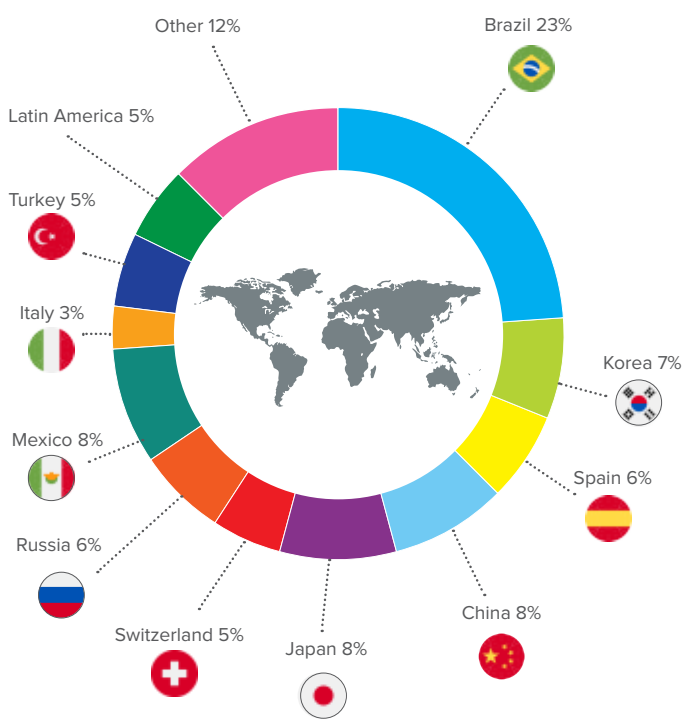
"CES has really special teachers. I like CES teachers because they always try to understand students and try to help students. The school has many different kinds of activities to make friends and speaking on activities is the best way to learn!"
 Sezen, Turkey

» COURSES

Course options for Toronto pages 34-43



» NATIONALITY MIX



» CITY CENTRE LOCATION



» TOP ATTRACTIONS IN TORONTO

CN TOWER

You cannot miss the most iconic landmark of Toronto - 553.3 metre - high concrete communications and observation tower that represents Toronto.

ROYAL ONTARIO MUSEUM

One of the largest museums in North America, and the largest in Canada, that holds art, world culture and natural history.

RIPLEY'S AQUARIUM OF CANADA

Enjoy an underwater adventure: meet 20,000 aquatic animals in the same place, and learn about the conservation of wildlife.

TORONTO ISLAND

Take a 10 minute ferry ride to see the best views of the scenic Toronto landscape and enjoy another world of tree-filled parks, car-free streets and quaint old cottages gazing at the beachfront.

NIAGARA FALLS

Only 90 minutes away from Toronto, explore nature and experience one of the world's wonders, the scenic Niagara Falls.

» TRAVEL



Subway Services



Bus Services



Cycle Lanes



Taxi Services

» DISTANCE FROM CES TORONTO

- Royal Ontario Museum.....1 min
- Ripley's Aquarium of Canada....20 min
- CN Tower.....30 min
- Toronto Island.....60 min
- Niagara Falls.....90 min



» WEEKLY SOCIAL PROGRAMME

The hardest part about a study-abroad experience in Toronto is selecting from the many exciting opportunities for adventure. Whether you are into sports, theatre, music, dance or art Toronto is one of the most exciting cities in North America. With a minimum of 20 activities per month, our Activity Coordinators will guide you on a journey that will allow you to engage with all this vibrant city has to offer.

When you arrive at CES Toronto, come and speak with one of our friendly Activity Coordinators. Just like a travel agent, these specialists delight in sharing their knowledge of the best food in Toronto and are eager to help you experience the city – just like a local! Let us show you why Toronto is the most famous city in Canada.



CESToronto



@CES_Schools



Cesschools



cesschools



» ACCOMMODATION

Do you want to experience Canadian culture? Then why not stay in homestay accommodation while you are studying English in Toronto. Our dedicated team of Homestay Coordinators have 800 homestays to choose from. By telling us exactly the kind of experience you would like to have, letting us know if you have any allergies, food preferences, or if you would like to live in a homestay that has children living at home, we will do our best to find the right option that matches your expectations.

If you like your own independence and you want to experience living in a furnished apartment or residence while you improve your language skills in Toronto, then perhaps one of our alternative accommodation options would be the best choice for you.

Offering monthly and weekly rates, we offer a wide range of options, just a short subway ride from the school.

Accommodation Options	Homestay	Year round student shared residence	Year round student shared residence
Booking options	Single or twin rooms	Single rooms	Single en-suite room
Meal Plans	Full and half board	Self-catering with shared kitchen facilities.	Self-catering with shared kitchen facilities.
Travel Time (approximately)	35 - 45 minutes by public transport	10 minutes by foot	25 minutes by foot
Other facilities	Internet	Internet Laundry facilities	Internet Laundry facilities
Information	Bed linen and towels provided	Bed linen provided	Bed linen provided

*For accommodation fees please see CES Official Price list. ** Please note, travel times may vary due to traffic conditions.

» STUDENT REVIEW

"By the time I arrived in Toronto, a driver picked me up at the airport and drove me to my family. When I got there, they were very excited to finally meet me. My host family was so nice to me the first time I became acquainted with them. We have a good and close relationship, also a great thing is that they talk in English. This is very helpful to improve my English. The house is clean and comfortable as well, I have my own room where I am able to study as well as have some privacy. I am really happy about this family."

Jessica, Switzerland



CES LONDON

Nelson House,
271 Kingston Road,
Wimbledon, SW19 3NW England
t | +44(0)20 8543 5150
f | +44(0)20 8540 1416
e | london@ces-schools.com
w | www.ces-schools.com



» ADDITIONAL INFORMATION

16

minimum age

14

maximum per class

8

average class size

11

year round classrooms

10

computers available

LONDON

“Learn it, Live it, Love it”

London is a fantastic place to study English - full of history, culture and exciting things to do. Wimbledon, where the school is located, is full of interesting shops, cafés, bars and restaurants. The English author Samuel Johnson believed that if you are tired of London, you are tired of life. Here at CES, we agree with him!

Famous for its Tennis Championships, and just 20 minutes from central London, it is easy to get to sights such as the London Eye, Big Ben and the Houses of Parliament, Buckingham Palace and Hyde Park. You can go shopping in London's famous Oxford Street or Westfield, enjoy the culture of the many wonderful museums and galleries and experience the theatres and cinemas of the exciting West End. The school has study, leisure and social facilities and a lively and varied activity programme all year round.

» KEY FACTS



Free WIFI



Student common room



Self access reference library



Study facilities with teacher assistance



Student computer room



Printing facilities



Student Garden with Patio area and Seating



Teacher training centre



Residential/Homestay accommodation



Tennis Access

» WHY CHOOSE CES LONDON

- 1 Located in one of London's fashionable suburbs, Wimbledon – home of the world famous Tennis Championships held every summer.
- 2 The school is located only 20 minutes by train from central London.
- 3 Experienced and enthusiastic teaching staff that work with you to improve your confidence and competence in English.
- 4 Homestay and residential accommodation available all year. There are also some premium homestays within walking distance.
- 5 Weekly social programme including free tennis, to experience the best that Wimbledon can offer.

» STUDENT REVIEW

"I'm from Saudi Arabia and my course is about three months. I like the small class sizes and I like the friendly relations between the teachers and the students in this school. The best thing is the teachers – they are the best in England! And we have great social activities, like BBQs, pub nights, museums and galleries."

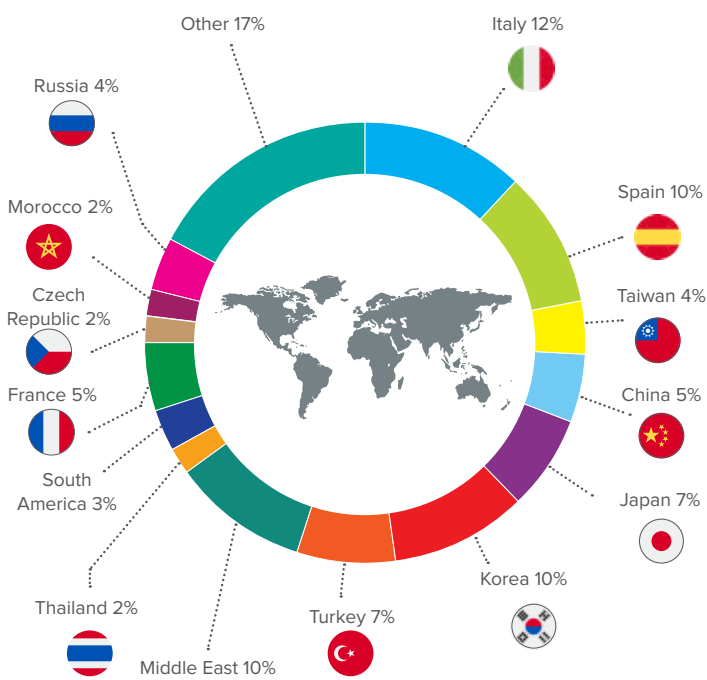
Mohammed, Saudi Arabia

» COURSES

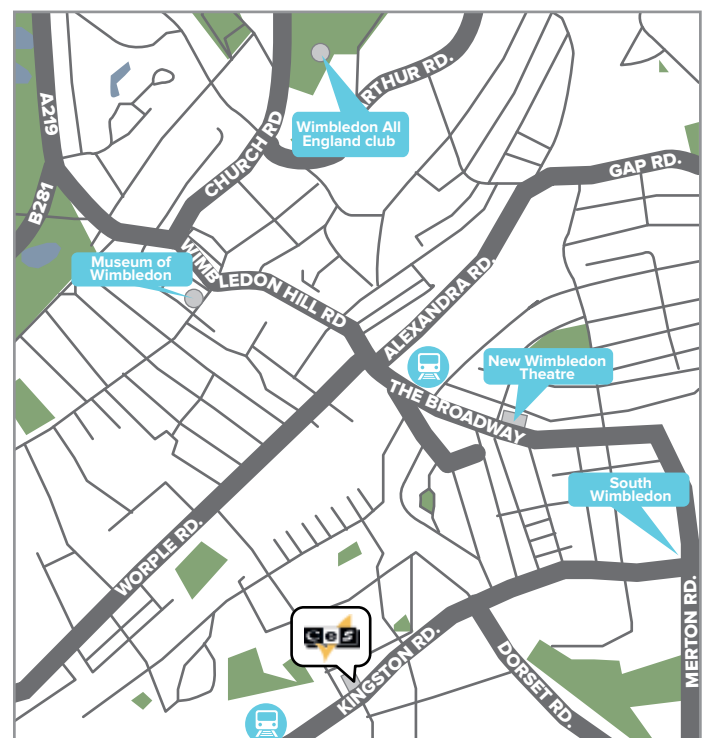
Course options for London pages 34-43



» NATIONALITY MIX



» PRESTIGIOUS LONDON SUBURB



» TOP ATTRACTIONS IN LONDON

WIMBLEDON ALL ENGLAND TENNIS CLUB

The oldest and most prestigious tennis tournament in the world, commonly known as Wimbledon, has been held in the All England Club since 1877, and is played on outdoor grass courts every summer.

THE LONDON EYE

Experience a new perspective of London by boarding the award winning architectural engineering achievement – the London Eye. It has become a permanent fixture on the London skyline.

TATE MODERN

One of the largest museums of modern and contemporary art in the world, and part of the Tate group. It is built on the site of a former power station, on the south bank of the River Thames.

BRITISH MUSEUM

Established in 1753, the British Museum is a public institution dedicated to human history, art and culture. It is the most visited tourist attraction in the UK.

» TRAVEL



» DISTANCE FROM CES LONDON

Wimbledon All England Club.....	15 min	
London Eye	20 min	
National Gallery/Trafalger Sq ...	25 min	
British Museum	35 min	
Tate Modern.....	40 min	

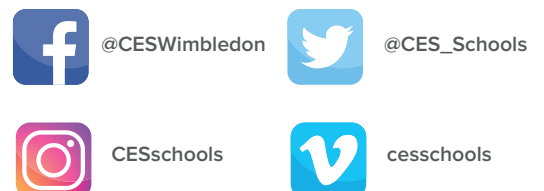


» WEEKLY SOCIAL PROGRAMME

Our dedicated social coordinators organise many activities, which include a free walking tour of Wimbledon town centre on your first day at CES!

Cosmopolitan Wimbledon has many restaurants, cafes, pubs, shops and other attractions to enjoy including the sophisticated Wimbledon Village and the Wimbledon Tennis Museum, in the All England Club. Activities also include cultural visits to museums, galleries, and famous sights in London. Fun things like free tennis, pub nights, bowling, table tennis and BBQ parties are a great part of social life in CES London. Day trips to other beautiful destinations in England are also organised, allowing you to experience the whole country.

We help our students see and experience British culture for a truly memorable education!





» ACCOMMODATION

London, being the capital city of the UK, offers various accommodation options. Homestay and residential accommodation are the most popular choices for students.

One of the best ways for you to improve your spoken English is to choose homestay accommodation. Family life is informal and the people are welcoming, friendly and talkative. Homestays are carefully selected and regularly visited by our Accommodation Officer, to ensure consistently high standards.

If you are a more independent person, residential accommodation options are also available.

Accommodation Options	Homestay	Homestay Premium	Year round Student Residence Stay Club	Year Round Student Residence Chapter Spitafields
Booking options	Single or shared room	Single or shared room	Single, twin, triple and quad en-suite studios	Single en suite rooms
Meal Plans	Half board		Self-catering: kitchens are equipped with cookers, cutlery and cooking utensils at Tooting and self catering, B&B and HB at Stay Club	Self-catering: fully equipped kitchen
Travel Time (approximately)	Up to 45 minutes by public transport	Up to 25 minutes by foot	50 minutes by public transport	50 minutes by public transport
Other facilities	Internet access on request		Gym, pool table, internet, laundry facilities	Gym, Cinema, laundry facilities, bar and lounge, free wifi
Information	Bed linen provided. Recommended to bring towels.		Bed linen and towels provided	Bed linen provided

*For accommodation fees please see CES Official Price list. ** Please note, travel times may vary due to traffic conditions.

» STUDENT REVIEW

They are very friendly; there are four members in the family. They take care of us well. The best thing is having conversation, to improve my English skills and getting to know the culture.
Peggy, Taiwan



CES EDINBURGH

54 Manor Place,
Edinburgh, EH3 7EH,
Scotland

t | +44(0)131 226 5004

f | +44(0)131 226 5003

e | edinburgh@ces-schools.com

w | www.ces-schools.com



Accredited by the
BRITISH COUNCIL
for the teaching
of English



ENGLISH UK
member



» ADDITIONAL INFORMATION

16

minimum
age

14

maximum
per class

8

average
class size

12

year round
classrooms

16

computers
available

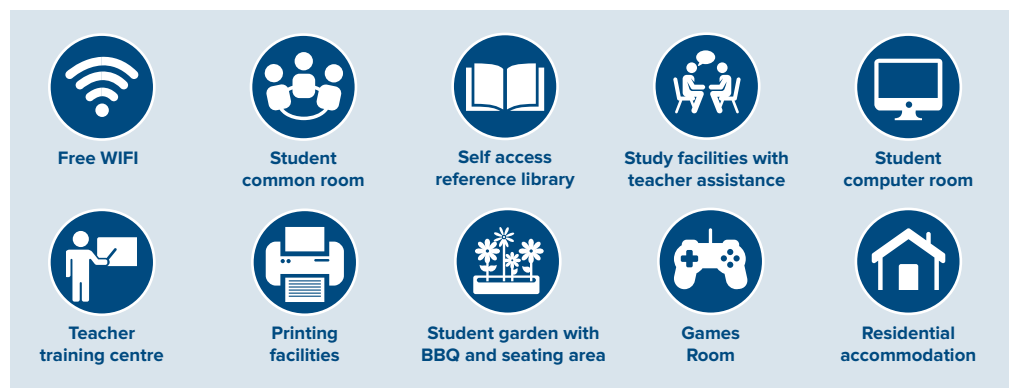
EDINBURGH

"Be inspired by Scotland's living capital"

Standing at the top of Arthur's Seat, a dormant volcano nestled at the heart of Edinburgh, you cannot help but be inspired by the history of the city that spreads out before you. To your left Edinburgh Castle stands tall over the Old Town, to your right the 200 foot high Scott Monument marks the beginning of the New Town, and between them the thin strip of Princes Street Gardens reminds you that this is the greenest city in the United Kingdom. Edinburgh is a vibrant city, with four thriving universities, multiple sports stadia, and a young modern parliament driving the city forward.

Located in the heart of Edinburgh's New Town, CES Edinburgh is an ideal location to study and experience one of the UK's most intriguing cities. Scotland's unique and distinctive culture will stay with you for a lifetime.

» KEY FACTS



» WHY CHOOSE CES EDINBURGH

- 1** Study in a traditional Georgian townhouse in the heart of Edinburgh's New Town.
- 2** Spacious student common room and private garden allow plenty of opportunities to socialise with fellow students.
- 3** Experienced and enthusiastic teaching staff that work with you to improve your confidence and competence in English.
- 4** Dedicated social programme team determined to ensure you receive a genuine Scottish experience.
- 5** Nearby transport links by bus and train make it easy to explore Scotland and the North of England.



» STUDENT REVIEW

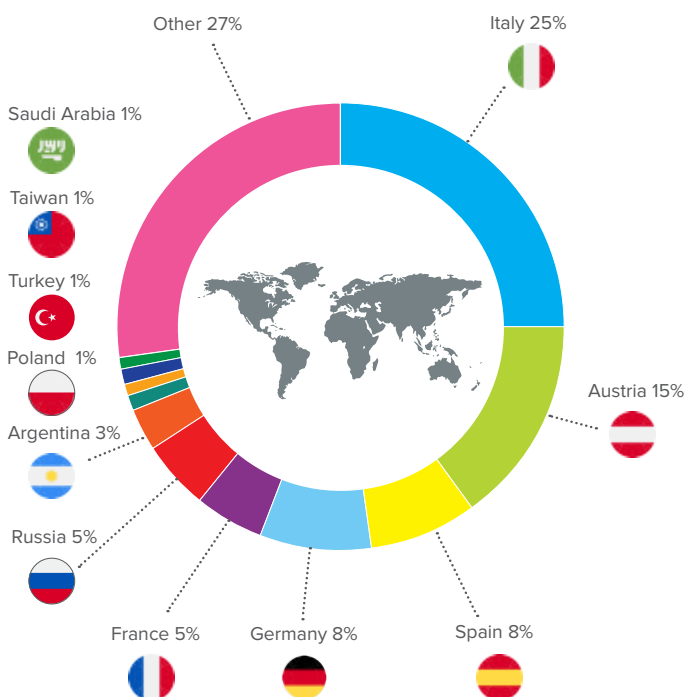
"I really liked the city of Edinburgh. The best thing about the school is all the people I have met here. The teachers are very nice and the lessons are very interesting."
Marissa from Germany

» COURSES

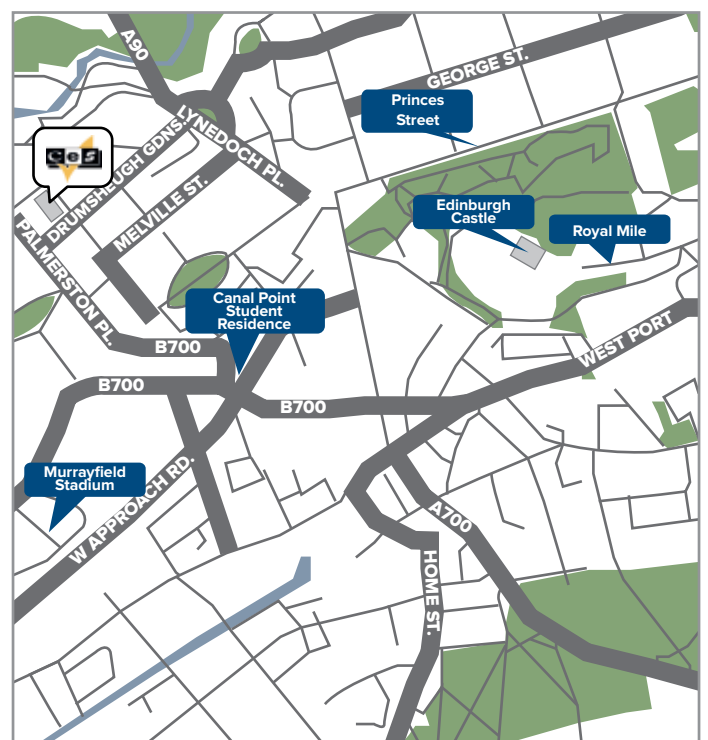
Course options for Edinburgh
pages 34-43



» NATIONALITY MIX



» CITY CENTRE LOCATION



» TOP ATTRACTIONS IN EDINBURGH

EDINBURGH CASTLE

Dominating the Edinburgh skyline from the top of Castle Rock, Edinburgh Castle is Edinburgh's most popular tourist attraction.

PRINCES STREET GARDENS

On of the great modern man-made gardens, Princes Street Gardens separates the Old and New Towns and is an oasis of calm in the centre of the city.

SCOTTISH PARLIAMENT BUILDING

Opened in 2004, the Scottish Parliament Building has already hosted many heated debates on Scotland's role in a modern world.

GREYFRIAR'S KIRKYARD

Under the constant protection of a statue of the loyal dog Bobby, Greyfriar's Kirkyard is the final resting place of many leading Scottish figures - and one famous dark wizard!

» TRAVEL



» DISTANCE FROM CES EDINBURGH

Museum of Modern Art.....	10 min	
Princes Street Gardens.....	12 min	
National Gallery	20 min	
Edinburgh Castle	25 min	
National Museum of Scotland.....	25 min	

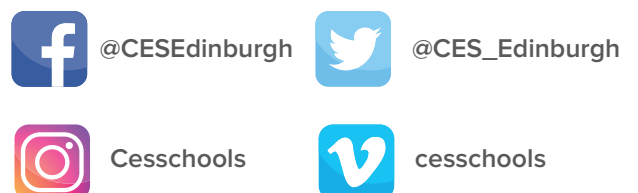


» WEEKLY SOCIAL PROGRAMME

A guide book will tell you where you can find the main attractions in a city, but in order to fully experience a location you need to have some local knowledge. Whether you are interested in learning why there is a statue of an elephant at the end of Princes Street, how the life of a local carpenter inspired Robert Louis Stevenson to write Dr. Jekyll and Mr. Hyde, or even why the statue of Greyfriar's Bobby is facing the wrong way, our team of dedicated "Yellow Shirts" are here to bring the city to life.

From your first day induction talk and orientation tour around the city, our Yellow Shirts will be with you every step of your stay. They will accompany you on visits to local landmarks and provide you with local knowledge and trivia that you won't find anywhere else.

Friendly, welcoming and always eager to help, you will very quickly stop thinking of them as members of staff, and start thinking of them as close friends.





» ACCOMMODATION

Students who study abroad do so because they are looking for an authentic local experience and students who choose to study in Edinburgh will find themselves immersed in a city rich in culture and heritage. Our warm and friendly hosts come from a variety of careers and backgrounds but they all share the same passion for welcoming students into their homes and like nothing better than sharing a natter over a cup of tea and a biscuit.

For those who are looking for a little more independence our student residence is located a short 15 minute walk from our main school building and allows you the opportunity to mingle with students from all over the globe. Shared kitchen and living areas provide ample opportunity for socialising, while a private bedroom and ensuite bathroom offer peace and quiet in a relaxed environment

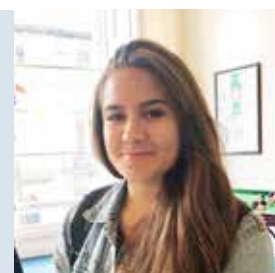
Accommodation Options	Homestay	Year round student shared residence
Booking options	Single for adults	Single en-suite rooms
Meal Plans	Half board	Self-catering with shared kitchen facilities
Travel Time (approximately)	30-50 minutes by public transport	15 minutes by foot
Other facilities	Internet	Internet Laundry facilities
Information	Bed linen and towels provided	Bed linen and towels provided

*For accommodation fees please see CES Official Price list. ** Please note, travel times may vary due to traffic conditions.

» STUDENT REVIEW

"I have really enjoyed my time with my host family here in Edinburgh. I live about 30 minutes away from the centre of town by bus. The house is modern and cosy and the family are very welcoming. I have the chance to practice my English every day. I would definitely recommend living with a host family!"

Agata from Poland



CES OXFORD

67 High Street, Wheatley,
Oxfordshire, OX33 1XT England
t | +44(0)1865 874786
f | +44(0)1865 873351
e | oxford@ces-schools.com
w | www.ces-schools.com



» ADDITIONAL INFORMATION

- 16
minimum age
- 9
maximum per class
- 6
average class size
- 10
year round classrooms
- 12
computers available

OXFORD

"The city of dreaming spires"

Learning and education are as much a part of the fabric of Oxford as the buildings themselves. As you explore the thirty eight colleges and over one hundred libraries, you begin to understand why this city has attracted so many great scholars over the years. Winding through the intimate city centre, the river Thames passes by historic colleges, as students punting down the river follow in the footsteps of Lewis Carroll, J.R.R. Tolkien and Oscar Wilde.

Located in the beautiful village of Wheatley, CES Oxford is the ideal choice for students who want a break from the hustle and bustle of a large city centre and instead prefer to study in a more relaxed environment where they can sample a traditional England. The doors to our converted Georgian house are always open and our staff and facilities embrace you in a safe, warm and welcoming learning environment.

» KEY FACTS

Free WiFi	Student common room	Self access reference library	Study facilities with teacher assistance	Student computer room
Kitchen facilities	Printing facilities	Garden	Pool table	Open late Mon - Thurs

» TOP ATTRACTIONS IN OXFORD

Bodleian Library	20 min	
Christchurch College	20 min	
Ashmolean Museum	20 min	
New College	20 min	
Pitt Rivers Museum	30 min	



» COURSES

Course options for Oxford p: 34-43



» WHY CHOOSE CES OXFORD

- 1 The village of Wheatley is a chance to experience traditional English life where neighbours know each other and are always happy to talk.
- 2 Highly qualified teachers who will help you improve your communication skills and building your confidence in the English language.
- 3 Extended school opening hours mean that learning is not restricted simply to class times, but instead offer a fully immersive experience.
- 4 A large student garden provides plenty of opportunities to relax with your fellow students and enjoy the English sunshine.
- 5 Our fully equipped student kitchen, student lounge and pool table make CES Oxford feel less like a school and more like a home from home.

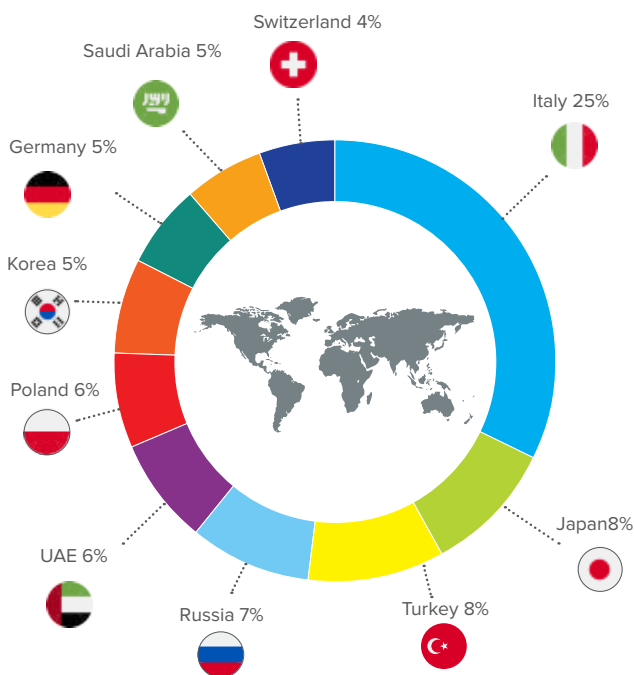


» ACCOMMODATION

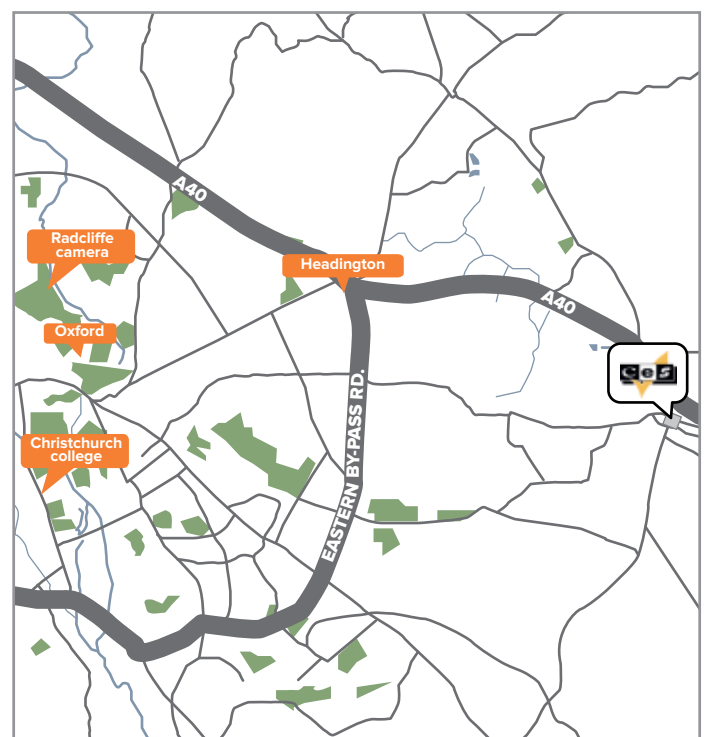
Accommodation Options	Homestay Standard	Homestay Premium
Booking options	Single or shared room	Single or shared room
Meal Plans	Half board	Half board
Travel Time (approximately)	20 - 25 minutes by public transport or foot	10 - 15 minutes by foot
Other facilities	Internet access on request	Internet access on request
Information	Bed linen and towels provided	Bed linen and towels provided

*For accommodation fees please see CES Official Price list.
 ** Please note, travel times may vary due to traffic conditions.

» NATIONALITY MIX



» WHEATLEY VILLAGE



CES LEEDS

9 Park Place,
Leeds, LS1 2RU England
t | +44 (0)113 2427171
e | leeds@ces-schools.com
w | www.ces-schools.com



Accredited by the
BRITISH COUNCIL
for the teaching
of English

ACCREDITED
Eaquals
Excellence in Language Education



» ADDITIONAL INFORMATION

16

minimum age

14

maximum per class

10

average class size

10

year round classrooms

12

computers available

LEEDS

"The Pride of the North"

From a thriving industrial town in the 1970s to a bustling modern university city today, Leeds has always been the beating heart of northern England. A wide range of restaurants, cafes, bars and clubs cater for its large student population, with the Leeds music scene the envy of the rest of the country. The city's mild climate and extensive parks bely its proud industrial heritage and make Leeds the third greenest city in the UK.

CES Leeds is located in the heart of the city's legal and financial district, and is just a short walk from the main bus and train stations. Housed in a historic red-brick Georgian Terrace, CES Leeds is a modern and spacious school. CES Leeds is also an official IELTS test centre and a CELTA teacher training school.

» KEY FACTS



Free WiFi



Student common room



Self access reference library



Study facilities with teacher assistance



Exam Centre



Printing facilities



Residential/Homestay accommodation



Student computer room



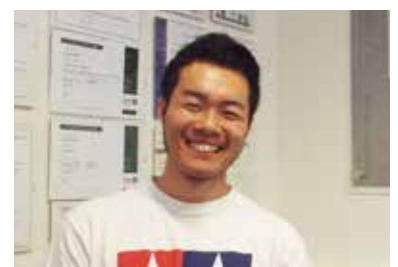
Teacher Training Centre



CES Online

» WHY CHOOSE CES LEEDS

- 1 Study in a vibrant and exciting student-oriented city.
- 2 Experienced and enthusiastic teaching staff that work with you to improve your confidence and competence in English.
- 3 Spacious student lounge and self-access centre that allow plenty of opportunities to socialise with fellow students.
- 4 Dedicated social programme team determined to ensure you experience the best that Leeds and north of England has to offer.
- 5 Nearby transport links by bus and train make it easy to explore the north of England.



» STUDENT REVIEW

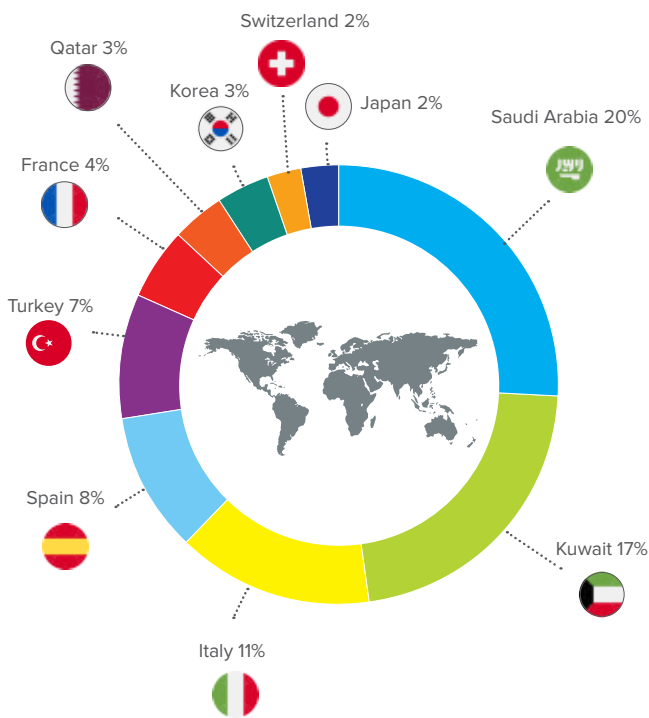
"I have loved being a student in such a multicultural and diverse school, as it has given me the chance to meet others from across the world!"
Shun Kadowaki, Japan

» COURSES

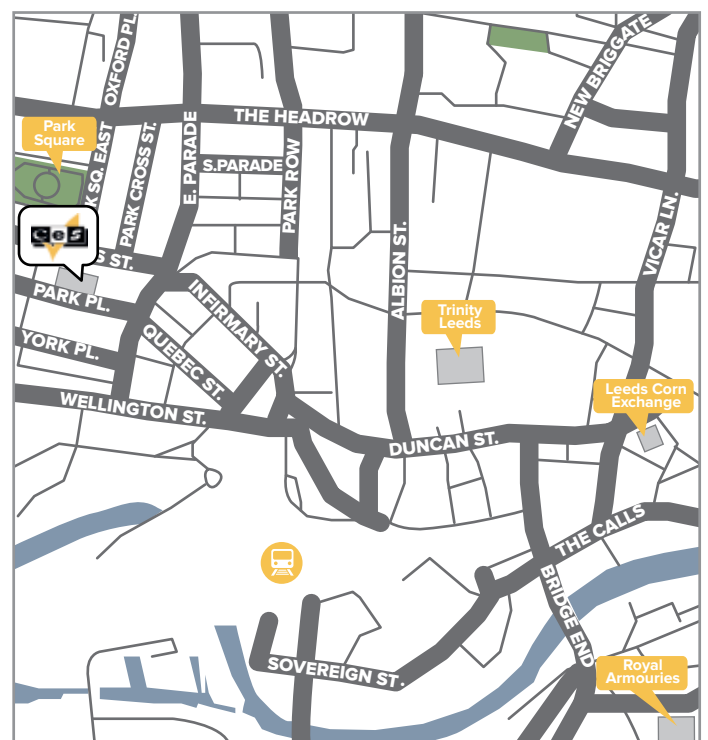
Course options for Leeds pages 34-43



» NATIONALITY MIX



» CITY CENTRE LOCATION



» TOP ATTRACTIONS IN LEEDS

ROYAL ARMOURIES

Home to Britain's national collection of arms and armour, explore a world-renowned collection of over 75,000 objects.

ARMLEY MILLS (LEEDS INDUSTRIAL MUSEUM)

Learn all about the trades and industries that made Leeds the great city it is today, from the surroundings of an authentic textiles mill. There's also a working 1920s cinema.

HAREWOOD HOUSE

Visit this treasured Georgian country house and its astounding grounds, including a bird enclosure with many exotic birds.

TROPICAL WORLD & ROUNDHAY PARK

Come and see turtles, exotic birds and much more in this beautiful glasshouse with one of Leeds' finest and biggest parks just across the road.

» TRAVEL



» DISTANCE FROM CES LEEDS

Royal Armouries.....	15 min	
Kirkstall Abbey & Museum.....	15 min	
Armely Mills.....	20 min	
Tropical World.....	30 min	
Harewood House.....	40 min	



» WEEKLY SOCIAL PROGRAMME

As you step into Leeds city centre, the first thing you see is the stunning architecture and the modern shopping malls, but the first thing you feel is the energy.

As a modern university city, Leeds is one of the most exciting cities in the United Kingdom with a thriving music scene and vibrant café culture catering for a young and active population.

With so much to do in the city it is easy to feel overwhelmed but luckily our dedicated yellow shirt team are here to make sure you enjoy your experience outside the classroom as much as the lessons inside them. Sign up for guided activities every weekday afternoon and evening!





» ACCOMMODATION

Despite the growing popularity of coffee, most British people will still agree that nothing beats a good cup of tea! It is lucky then that Yorkshire is the home of British tea and the residents of Leeds like nothing better than to sit down with a nice cuppa and have a chat about the weather, politics, or simply what has happened that day. This positive attitude has led to Yorkshire people being named as the most welcoming in England, and the perfect homestay for students who want the opportunity to use their English in a more natural environment with native speakers.

As in most British cities, homestays in Leeds are based in the pleasant surrounding neighbourhoods rather than the city centre which means that students will have an average journey time of around 30 – 40 minutes to the school. Our city centre location and the city's excellent bus and train routes make travelling through Leeds a pleasure and students often use the journey to take in the fabulous architecture and parklands.

Homestay accommodation in Leeds is offered on a full board basis and limited self-catering residential accommodation is available for adult students during July and August.

Accommodation Options	Homestay	Year round student shared residence	Summer student residence
Booking options	Single or twin/triple rooms	Single en-suite room	Single en-suite room
Meal Plans	Full board	Self-catering: kitchens are equipped with cookers, cutlery and cooking utensils.	
Travel Time (approximately)	30 - 40 minutes by bus	20 minutes by foot	8 minutes by foot
Other facilities	Light laundry	Free WiFi / laundry facilities / gym / bar	Free WiFi / laundry facilities
Information	Bed linen and towels provided	Bed linen provided	Bed linen provided

*For accommodation fees please see CES Official Price list. ** Please note, travel times may vary due to traffic conditions.

» STUDENT REVIEW

"I have really enjoyed living with a host family as it has given me the chance to both widen my knowledge of the English culture and also practise my English on daily basis. By living in the nice, green neighbourhoods outside the city centre I have had the opportunity to know Leeds better."

Daniela Deyan, Spain



CES WORTHING

12 Stoke Abbott Road,
 Worthing, West Sussex
 BN11 1HE, England
t | +44 (0)1903 231330
f | +44 (0)1903 200953
e | worthing@ces-schools.com
w | www.ces-schools.com



» ADDITIONAL INFORMATION

- 16**
minimum age
- 14**
maximum per class
- 10**
average class size
- 13**
year round classrooms
- 16**
computers available

WORTHING

"Experience England by the sea"

To sit on the beach with an ice cream in hand and watch the waves roll in is the very definition of an English summer, and with the English south coast just a short walk from CES Worthing this summer can easily be yours. A small seaside town, Worthing combines traditional English charm with a thriving seafront that offers plenty of opportunities to enjoy the British sun. Kayaking, windsurfing and sailing are all on offer for the adventurous, with newspaper wrapped fish 'n' chips providing a genuine taste of England.

CES Worthing can be found in a quiet residential area, with spacious gardens providing ample room to relax between lessons. Our dedicated social programme team are on hand to help you experience the best the south coast has to offer.

» KEY FACTS

- Free WIFI
- Student common room
- Self access reference library
- Study facilities with teacher assistance
- Student computer room
- Printing facilities
- Outdoor gardens with seating areas
- Beach nearby
- Homestay options
- CES Online

» TOP ATTRACTIONS IN WORTHING

Worthing Pier.....	10 min	
The Dome Cinema.....	12 min	
Brighton.....	20 min	
Arundel Castle.....	30 min	
The High Down Gardens.....	40 min	



» COURSES

Course options for Worthing p: 34-43



» WHY CHOOSE CES WORTHING

- 1** Learn English in one of the most beautiful and sunniest parts of Great Britain.
- 2** CES Worthing is just a 10 minute walk from the beautiful beach and pier.
- 3** Great transport links to central London (90 minutes by train) and Brighton (20 minutes by train).
- 4** Dedicated team of teachers and administration staff to help you enjoy your stay in the best way possible.
- 5** Homestay accommodation options many within walking distance to the school.



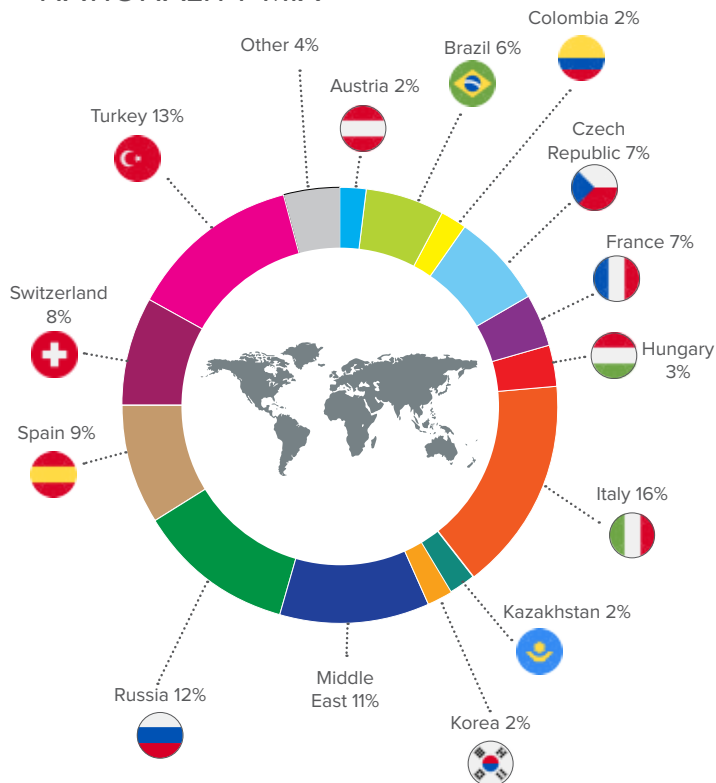
» ACCOMMODATION

Accommodation Options	Homestay
Booking options	Single or shared room
Meal Plans	Full board
Travel Time (approximately)	30 minutes - either by foot or by public transport
Other facilities	Internet access on request
Information	Bed linen and towels provided

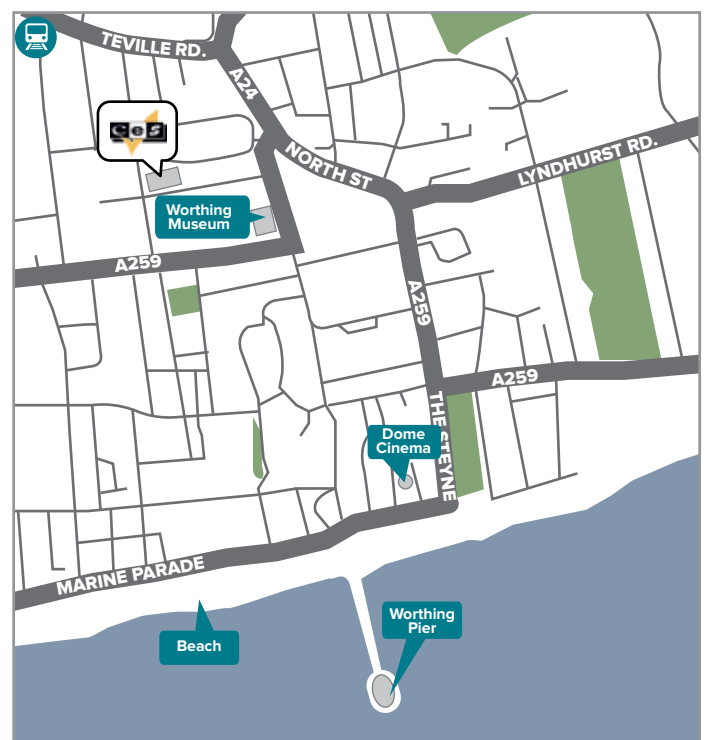
*For accommodation fees please see CES Official Price list.
 ** Please note, travel times may vary due to traffic conditions.



» NATIONALITY MIX



» TOWN CENTRE



CES HARROGATE

8a Royal Parade,
Harrogate, HG1 2SZ,
Harrogate, UK
t | +44 (0)1423 531969
e | harrogate@ces-schools.com
w | www.ces-schools.com



» ADDITIONAL INFORMATION

- 16
minimum age
- 9
maximum per class
- 6
average class size
- 8
year round classrooms
- 9
computers available

HARROGATE

"A slice of traditional England"

To master a language, you must first understand the culture and traditions of those who speak it, and there is nowhere in the UK that quite captures the culture and tradition of Britain as the historic English spa town of Harrogate. With its rolling parkland and vast publicly maintained gardens, Harrogate offers a calm and relaxed location in which to study and immerse yourself. Whether you are enjoying tea in the world famous Betty's Tea Rooms, or watching the local cricket team on a warm Saturday afternoon, it is easy to see why Harrogate has repeatedly been named as the happiest place to live in the UK.

As the smallest school in the CES family, CES Harrogate offers an intimate learning environment in one of England's most picturesque locations. Small class sizes and a focus on creating a community atmosphere mean that staff, students and teachers work together to create a unique learning environment.

» KEY FACTS

- Free WiFi
- Student common room
- Self access reference library
- Student computer room
- Study facilities with teacher assistance
- Printing facilities
- Max 9 per class
- Exam centre
- Safe and Tranquil school
- CES Online

» TOP ATTRACTIONS IN HARROGATE

Betty's Tea Rooms	5 min	
Harrogate Turkish Baths.....	5 min	
Mother Shipton's Caves.....	20 min	
Harrogate Indoor Climbing Centre	20 min	
RHS Harlow Carr.....	30 min	



» COURSES

Course options for Harrogate p: 34-43

- @CESHarrogate
- CESschools
- CESschools



» WHY CHOOSE CES HARROGATE

- 1** Harrogate was named the happiest place in the United Kingdom for three consecutive years.
- 2** As the IELTS test centre for the North of England, CES Harrogate's experienced teaching staff have the knowledge and skills to help you achieve the exam results you desire.
- 3** Our cosy school environment means you will quickly get to know your fellow students, your teachers and all the CES staff.
- 4** Enjoy the traditional English experience of afternoon tea in the world famous Betty's Tea Rooms.
- 5** A central location in the heart of town allows us to offer a range of homestays within easy distance of the school.



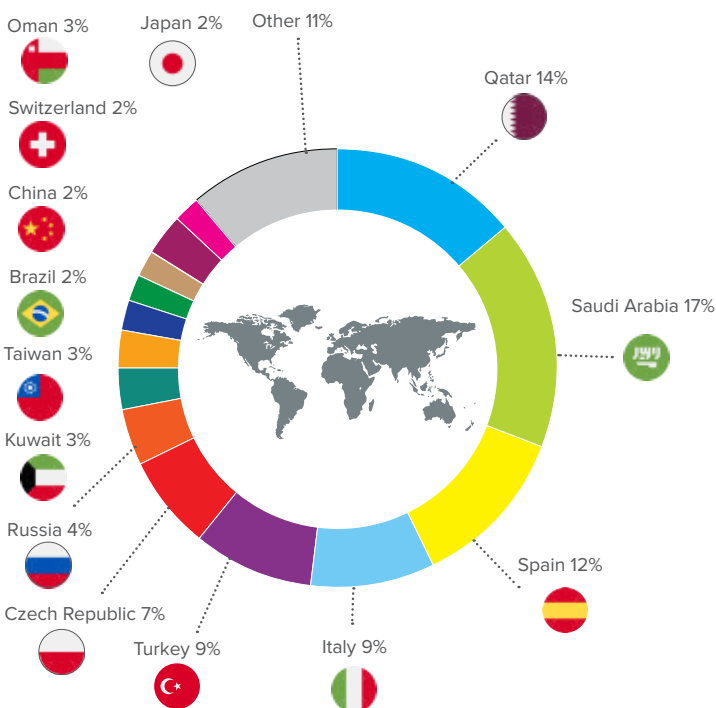
» ACCOMMODATION

Accommodation Options	Homestay
Booking options	Single Double/twin shared room on request only
Meal Plans	Half board
Travel Time (approximately)	5 to 30 minutes by foot or 10 to 20 minutes by public transport
Other facilities	Internet access on request Private Bathroom on request
Information	Bed linen and towels provided

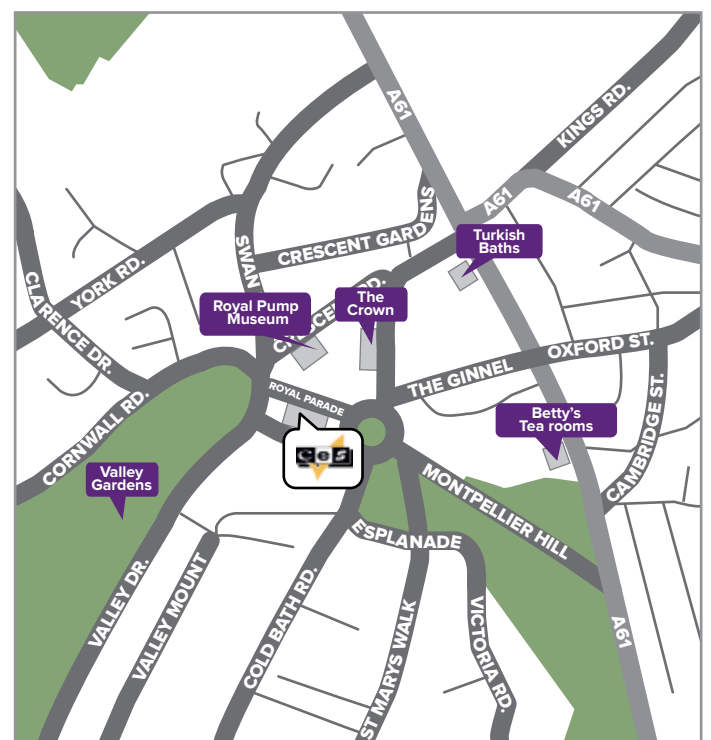
*For accommodation fees please see CES Official Price list.

** Please note, travel times may vary due to traffic conditions.

» NATIONALITY MIX



» CENTRAL LOCATION



Level Descriptors in Centre of English Studies

CES offers tuition for students who wish to make the maximum amount of progress to develop their English language skills that may be required for further study or future career opportunities.

CES provides various language courses suitable to all English language levels. Our professional Academic Team are available to help and advise you on your language course choices.

Every week your teachers make a plan based on the learning needs of the students.

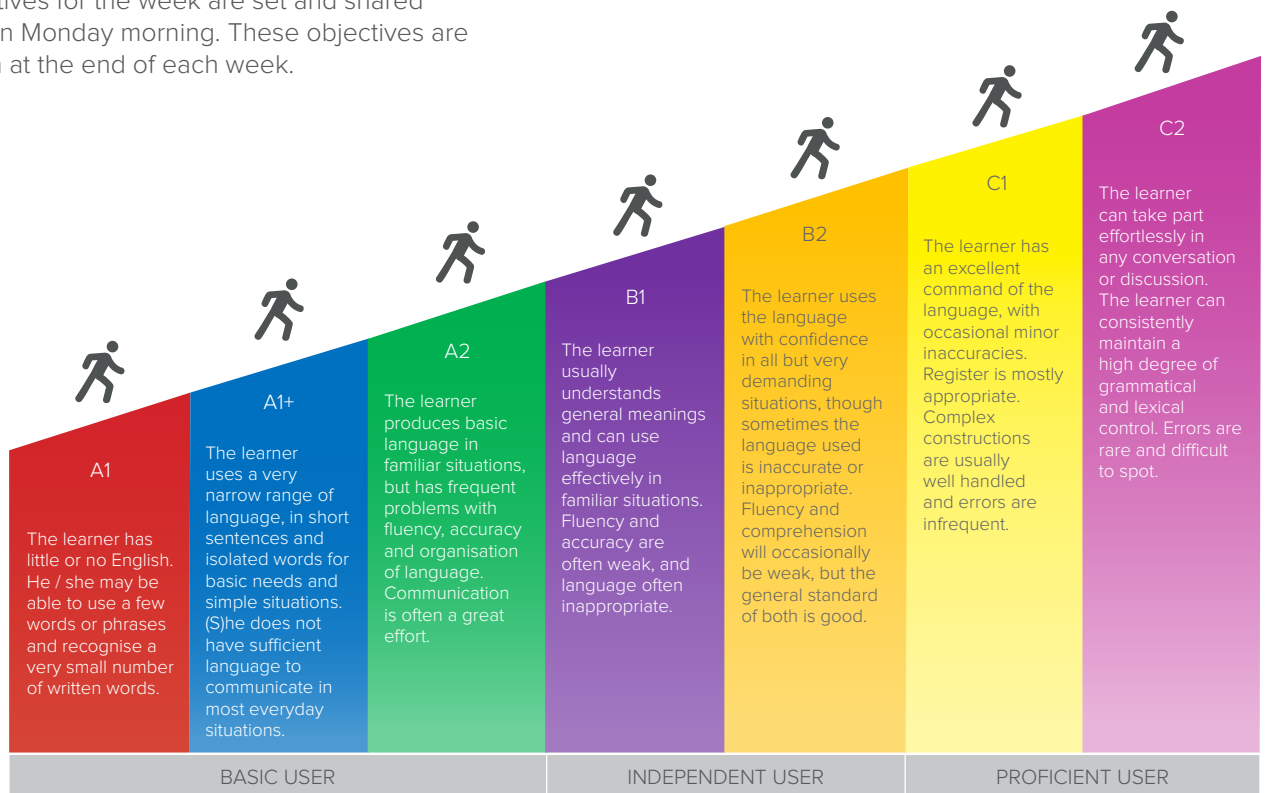
The course book and our Curriculum Framework, which is matched to the CEFR (Common European Framework of References for Languages) is the basis for much of the curriculum, with supplementary material taken from resource books and authentic materials.

Learning objectives for the week are set and shared with students on Monday morning. These objectives are reviewed again at the end of each week.

You will also have regular revision and testing to help you review your learning and measure your progress. In addition, you will have regular online tutorials with your teacher where you can discuss your individual progress and needs in more detail.

ALL OUR LANGUAGE COURSES INCLUDE

- Placement test
- Access to CES Online Platform
- Welcome Orientation tour on the first Monday of your course
- Access to the Adult Social programme
- Access to the Self-Access Centre
- Full use of school facilities



CORRESPONDING SCORES							
IELTS EXAM	1	2-3	4	4.5-5.5	5.5-6	6-7	7-9
CAMBRIDGE EXAM					FCE	CAE	CPE
TOEIC		10-250	255-400	405-600	605-780	785-900	
TOEFL			450	450-500	500-600	600-650	
CLASS AVAILABILITY							
GENERAL ENGLISH	YES	YES	YES	YES	YES	YES	YES
BUSINESS CLASS				YES	YES	YES	
IELTS CLASS				YES	YES	YES	



Standard English Course

20 LESSONS PER WEEK

This is the **most** popular course in all CES schools. The Standard General English Course takes place every morning from Monday to Friday, leaving you free to join the Social Programme or study on our CES Online e-learning platform and in our Self- Access facilities every afternoon.

Your morning lessons are divided into two parts, usually taught by two different teachers. Lessons concentrate on building your knowledge of the language, focusing primarily on helping you increase your vocabulary and improving your grammar so that you attain the levels of accuracy you require. Lessons also work on improving your overall communicative proficiency and fluency, focusing on the four skills of speaking, listening, reading and writing. In addition to this you will work on specific pronunciation difficulties and expand the range of language you use in real-life situations.

» COURSE OVERVIEW

Start Dates:	Every Monday
Minimum Level:	Beginner (A1)
Lessons per week:	20 lessons per week
Lesson duration:	IRL: 1 lesson - 55 minutes UK: 1 lesson - 45 minutes CAN: 1 lesson - 50 minutes
Class Size:	Average 12, Maximum 14
Minimum age:	16+
Available in:	All centres

» TIMETABLE

LOCATION	TIME/DAY
IRELAND:	09:00 – 13:00 Monday to Friday
UK:	09:30 – 13:00 Monday to Friday
CANADA:	08:45 – 12:20 Monday to Friday

STUDENTS TAKING THE STANDARD GENERAL ENGLISH COURSE CAN ALSO THINK ABOUT EXPANDING THEIR COURSE WITH:

- ✓ CES Self-Access
- ✓ CES Social Programme
- ✓ IELTS Preparation
- ✓ Conversation Classes
- ✓ Business English
- ✓ One-to-One Lessons

OPTIONS TO TRANSFER:

(Depending on availability and your language level)

- Full time IELTS preparation course
- Cambridge FCE or CAE course
- Multi Destination course



Intensive English Course

On the Intensive English Course, you will follow the same programme as the Standard Course in the mornings. You will also have afternoon classes, in which you will have the opportunity to improve your communicative proficiency through discussions, roleplays and topical debates.

Our modern teaching methods and use of supplementary materials give you the best opportunity to build your language skills and maximise the benefits of the time you spend with us.

» COURSE OVERVIEW

Start Dates:	Every Monday
Minimum Level:	Beginner (A1)
Lessons per week:	IRL: 26 lessons per week UK: 30 lessons per week CAN: 25 or 30 lessons per week
Lesson duration:	IRL: 1 lesson - 55 minutes UK: 1 lesson - 45 minutes CAN: 1 lesson - 50 minutes
Class Size:	Average 12, Maximum 14
Minimum age:	16+
Available in:	All centres

» TIMETABLE

LOCATION	TIME/DAY
IRELAND:	09:00 – 13:00 Monday to Friday 14:00 – 16:00 Tuesday to Thursday
UK:	09:30 – 13:00 Monday to Friday 14:00 – 16:30 Tuesday to Thursday
CANADA:	08:45 – 12:20 Monday to Friday 13:05 – 14:10 or 15:30 Monday to Thursday

ALTERNATIVE OPTIONS FOR AFTERNOON CLASSES:

(Depending on availability and your language level)

- IELTS preparation (see page 20)
- Business English (see page 22)
- One to One (see page 24)



Combination Course

On our Combination Course, you will follow the Standard Course in the mornings and have two afternoons of private individual lessons. These are designed to meet your individual requirements and give you the perfect opportunity to work on specific language areas of your choice with your own teacher. In advance of your course or during your first individual lesson, you will complete a **Needs Analysis** form with your teacher, in which you can identify particular areas to work on. This helps your teacher to plan your programme according to your learning needs, and ensures you get the maximum benefit from your lessons.

» COURSE OVERVIEW

Start Dates:	Every Monday
Minimum Level:	Beginner (A1)
Lessons per week:	IRL: 25 lessons per week UK: 30 lessons per week
Lesson duration:	IRL: 1 lesson - 55 minutes UK: 1 lesson - 45 minutes
Class Size:	Average 12, Maximum 14
Minimum age:	16+
Available in:	All centres

OPTIONS FOR ONE TO ONE CLASS:

Please contact us if you would like to discuss your needs further. We have a range of options such as English for Professionals, Business English, English for Aviation, English for Medical Professionals, Examination Preparation, OET, IELTS, TOEFL, TOEIC, BULATS, CAMBRIDGE BEC, PET, FCE, CAE, CPE and more.

» TIMETABLE

LOCATION	TIME/DAY
IRELAND:	09:00 – 13:00 Monday to Friday (20 lessons) 14:00 – 16:30 Monday to Friday (5 lessons delivered over two sessions)
UK:	09:30 – 13:00 Monday to Friday 14:00 – 16:30 Monday to Friday (5 lessons delivered over two sessions)



General English with Business

This option is designed for students who wish to improve their communicative proficiency in a business environment. Students follow the same programme as the Standard Course in the mornings. You will also have afternoon classes focussing primarily on the specialised language of Business English in the following areas:

- Meetings and negotiations
- Socialising and travel
- Oral and written presentations
- Analysing figures and describing trends
- Sales/Marketing/Advertising
- Understanding cultural differences
- Written communication

*If you have any particular areas of Business English that you wish to focus on, the course can be adapted to accommodate these. Please email us at info@ces-schools.com if you would like to discuss your needs.

Our modern teaching methods and use of supplementary materials give you the best opportunity to build your language skills and maximise the benefits of the time you spend with us.

» COURSE OVERVIEW

Start Dates:	IRL: February to October UK: July and August CAN: January to December
Minimum Level:	Intermediate B1, B2 recommended
Lessons per week:	IRL: 26 lessons per week UK: 30 lessons per week CAN: 25 lessons per week
Lesson duration:	IRL: 1 lesson - 55 minutes UK: 1 lesson - 45 minutes CAN: 1 lesson - 50 minutes
Class Size:	Average 12, Maximum 14
Minimum age:	16+
Available in:	All centres

» TIMETABLE

LOCATION	TIME/DAY
ALL LOCATIONS:	Timetable follows same hours as Intensive English course. Please see page 36.

IELTS Preparation Courses



IELTS stands for International English Language Testing System. It is the most widely recognised third level English language entry requirement in Europe. It tests the four language skills – listening, reading, writing and speaking. IELTS is a secure, valid and reliable test of real-life ability to communicate in English for education, immigration and professional accreditation purposes.

If you plan to enrol for third level studies in either Ireland, the UK or Canada, you may need to take the IELTS Exam. As the only official IELTS test centres in their areas, CES Dublin, CES Harrogate and CES Leeds are able to offer IELTS courses with the opportunity for students to take their IELTS exam in-house. In our other centres the exams can be taken at an external centre, usually once or twice a month.

» CES UK COURSE OVERVIEW

Start Dates:	Every Monday
Minimum Level:	Intermediate (B1), Upper Intermediate (B2) recommended
Lessons per week:	30 lessons per week
Lesson duration:	1 lesson 45 minutes
Class Size:	Average 12, Maximum 14
Minimum age:	16+
Available in:	All centres

» CES TORONTO COURSE OVERVIEW

Start Dates:	Every Monday
Minimum Level:	Intermediate (B1), Upper Intermediate (B2) recommended
Lessons per week:	20 ,25 or 30 lessons per week
Lesson duration:	1 lesson 55 minutes
Class Size:	Average 12, Maximum 14
Minimum age:	16+

» CES DUBLIN COURSE OVERVIEW

Start Dates:	Every Monday
Minimum Level:	Intermediate (B1), B2 recommended

At CES Dublin, we have a range of choices for students wishing to prepare for the IELTS examination.

IELTS Afternoon Class:	Tuesday to Thursday 14:00 – 16:00 6 x 55 minute lesson
IELTS 20:	Monday to Friday 09:00 – 13:00 20 x 55 minute lessons
IELTS Intensive:	20 x 55 minute lessons Monday to Friday 09:00 – 13:00 plus 6 x 55 minute lessons Tuesday to Thursday 14:00 – 16:00

If you test below the minimum level on arrival, you will join a general English class. Your progress will be carefully monitored and you will be encouraged at every stage of your studies. You will then join the IELTS Preparation Course when you have made sufficient progress to be able to fully benefit from the course.

*Please note that all courses at CES focus on Academic IELTS

IELTS EXPRESS Super Intensive Course

This course is an EXPRESS 2 week IELTS SUPER Intensive Course that will prepare you for the IELTS exam. This course focuses on improving students' English, as well as on developing their exam techniques.

CES is the largest IELTS Test Centre in the North of England. Our teachers have been specially trained to help the student achieve the greatest possible results within their two weeks at CES.

You will also have the opportunity to sit an IELTS exam during the last week of the course (exam must be booked separately). If you are planning to take the IELTS exam while studying with CES, you should contact our Examinations Office on ielts@ces-schools.com for help with registration online

» COURSE OVERVIEW

Start Dates:	Please see Adult price list
Course Length:	2 weeks
For students aged:	16+ years
Levels:	3 (Intermediate to Advanced)
Available in:	Ireland and UK

**For your current level please refer to CEFR level guide on page 34

Cambridge Examination Preparation Courses



CAMBRIDGE ENGLISH
Language Assessment

Cambridge English Language Assessment provides a number of internationally recognised examinations for people who need formal certification of their English language proficiency.

Cambridge Examination Courses at CES are designed to prepare students for one of the following Cambridge Examinations:

- First Certificate in English FCE (B2 First)
- Certificate in Advanced English CAE (C1 Advanced)

The Cambridge Examinations usually take place four times per year, mid-March, mid-June, mid-August, and mid-December. Our courses are planned to finish on the week before the exam will take place.

Students planning to take the FCE course should be at minimum level B2 (upper-intermediate) and for the CAE at C1 (advanced) level. We cannot accept a student for any examination course until CES has confirmed the student is at the appropriate level for their chosen examination. Please see our Level Guide on page 34 or contact us today at info@ces-schools.com to take the CES placement test.

Please note that CES Dublin, CES Harrogate, CES Leeds and CES Toronto are official Cambridge Test centres, so you can take your exam in the same CES school you studied in. Other CES centres will help you apply for and organise your examination.

» TIMETABLE

LOCATION	TIME/DAY
IRELAND:	09:00 – 13:00 Monday to Friday
UK:	09:30 – 13:00 Monday to Friday 14:00 – 16:30 Tuesday to Thursday
CANADA:	08:45 – 12:20 Monday to Friday 13:05 – 14:10 Monday to Thursday

*Please note there must be a minimum of 8 students in order for CES to run the class.



Cambridge FCE Fast Track

CES is delighted to introduce our FCE Cambridge Examination Fast Track Course. This takes place during the month of July and is available for Adult and Junior students.

The actual FCE examination will take place at the end of the last week of the course.

The lessons will focus on the four skills, grammar and use of English, vocabulary building, and tips and strategies for the test. Students will have regular examination practice with authentic test materials to ensure that they are familiar with the structure of the exam and can practice the language and techniques they need. Every student will also be appointed a tutor who continually assesses their progress and provides feedback to help them really understand the exam and develop the skills necessary to obtain the grade they require.

» COURSE OVERVIEW

Start Dates:	Please see Adult price list
Minimum Level:	Upper Intermediate (B2)
Lessons per week:	20 lessons per week
Lesson duration:	55 minutes
Class Size:	Maximum 14
Minimum age:	16+
Available in:	Dublin

» TIMETABLE

ADULT:	09.00 – 13.00 Monday to Friday
---------------	--------------------------------

Long Term Course

Come to CES and study on one of our courses for a minimum period of 24 weeks and stay as long as you want. Students are able to really further their English language learning over a greater length of time. This allows students to really benefit from their stay. Students can join our many examination courses and take exams while in Ireland or the UK.

Students are allowed to take the Standard, Intensive, Combination or Examination Courses while studying in the school. Contact us for more information on all the different options that we can give you.

» COURSE OVERVIEW

Start Dates:	Every Monday
Minimum Level:	Beginner (A1)
Lessons per week:	IRL: 20 or 26 lessons per week UK: 20 or 30 lessons per week
Lesson duration:	IRL: 1 lesson - 55 minutes UK: 1 lesson - 45 minutes
Class Size:	Average 12, Maximum 14
Minimum age:	16+
Available in:	All centres

STUDENTS TAKING THE LONG TERM COURSE CAN ALSO THINK ABOUT EXPANDING THEIR COURSE WITH:

- ✓ CES Self-Access
- ✓ CES Social Programme
- ✓ IELTS Preparation
- ✓ Conversation Classes
- ✓ Business English
- ✓ One-to-One Lessons



Multi-Destination Course

Experience more than one of our fantastic locations? CES gives you the unique opportunity to study in different countries and in any of our centres.

This course gives you the opportunity to live in both the UK and Ireland and learn more about the culture, history and social life of these fantastic locations.

Come and study in our Wimbledon school and experience one of the greatest cities in the world, London. Then come over to our Dublin centre for the next part of your programme to enjoy the famous Irish hospitality and visit

some of the most breath-taking natural attractions in the world. Or why not start in Worthing on the sunny south coast of England and then make your way to the city in the heart of northern England, Leeds?

You can also take in the University City of Oxford, the beautiful Spa Town of Harrogate and the culturally rich city of Edinburgh.

You can divide your stay as you wish and can start your course in either England, Scotland or Ireland – the choice is yours! Students can take the Standard or Intensive course or even a mixture of both.

Pre-sessional English Programme

On this course you will study General English every morning and IELTS/Academic English in the afternoons. At the end of the course, provided you get the required IELTS score, you will progress on to one of the CES partner foundation colleges in order to prepare for university entrance. As part of the IELTS classes you will receive instruction in the Academic English skills necessary for a course of further study. These would include note-taking, listening to lectures, referencing and conducting research.

» COURSE OVERVIEW

Start Dates UK:	Please see Adult price list
Start Dates Ireland:	Please see Adult price list
Lessons per week:	IRL: 26 lessons per week UK: 30 lessons per week
Lesson duration:	IRL: 55 minutes UK: 45 minutes
Class Size:	Average 12/ Maximum 14
Minimum age:	16+ (students should be 17 years old to progress to the Foundation Programme)
Available in:	All centres

» TIMETABLE

LOCATION	TIME/DAY
IRELAND:	09:00 – 13:00 Monday to Friday 14:00 – 16:00 Tuesday to Thursday
UK:	09:30 – 13:00 Monday to Friday 14:00 – 16:30 Tuesday to Thursday
CANADA:	Please contact us for further information

PLEASE NOTE:

Please note that students will be expected to undertake guided self-study in our self-access centres every Monday and Friday afternoon.

Work Experience Programme (unpaid)

The Work Experience programme is the ideal way for students to further improve their English language level while developing their professional skills. Through hands-on experience you will gain a greater understanding of the international business environment.

The Work Experience programme is perfect for university students, graduates and young professionals aged 18 years or over and who have a minimum English level of Intermediate B1. You must take a minimum 4 week English language course with us before you start your work experience which you can have for a period of 4 weeks to 6 months.



» COURSE OVERVIEW

DURATION	INFORMATION
Up to 5 weeks:	BASIS: Unpaid OPTIONS: Cannot specify sector or type of work. May be in a charity organisation/shop/office or in the hospitality sector.
6-12 weeks:	BASIS: Unpaid OPTIONS: May request sector or type of work but this cannot be guaranteed. May be in a charity organisation/ shop/office. Likely to be general administration tasks
3-6 months:	BASIS: Unpaid OPTIONS: May request sector or type of work. Is likely to secure placement relevant to experience/ qualifications/level of English. The work will have a high degree of administrative tasks and will be a junior position.

English and Culture 50's+ Programme

» COURSE DETAILS

Based in our beautiful centres of Harrogate and Oxford these two centres are considered by many to be located in the real heart of England, small and unspoilt yet hugely popular with tourists.

This is a programme specifically focused on those who are young of heart and eager to take on new challenges and experiences. The programme is based on the timetable of our Standard Course (09.30-13.00 Monday to Friday) and will focus on the improvement of the participant's general day-to-day use of the English language whilst touching on areas of English life, its history, culture and food. All areas of the English language, linguistic knowledge, vocabulary and communication will be improved through various grammar exercises.

There is a social programme included as part of this course that offers various tours and cultural experiences as well as full day tours on the Saturday mid-course that will combine to make this an unmissable opportunity!

IMPORTANT INFORMATION

Included: 20 lessons per week language classes and afternoon visit

For students aged: 50+ years

Levels: Elementary to Advanced

Students who wish to change their class for any reason can be placed in General English classes on request.



English for Professionals

CES has vast experience in delivering courses for professionals and managers across a broad range of business contexts.

You will receive one-to-one tuition in language suitable to your profession and the social interaction you will encounter, giving you the confidence and vocabulary necessary for clear communication in the modern business world.

» EXECUTIVE COURSES

Our Executive Courses are designed for business people, managers and professionals who wish to make the maximum amount of progress in the shortest possible time. Each course is designed to meet the specific needs and objectives of the participants. Clients return a completed Language Needs Analysis questionnaire to CES in advance to help us prepare the most effective course for your requirements.

Your teacher will discuss the details of your course with you again and you will have the opportunity to change the emphasis and content as you progress. These courses are available for both individuals and groups. Please contact info@ces-schools.com to discuss your programme or requirements.



» MEDICAL PERSONNEL

Topics include: attending international conferences, delivering speeches or medical papers to a conference, meetings and interviews and specific vocabulary and phrases for doctors and nurses.

» AVIATION PERSONNEL

For a profession that requires correct terminology and clear communication at all times, CES can provide vocabulary and speaking lessons for air traffic controllers, pilots and airport managers.

English for Teachers/CLIL

» COURSE DETAILS

English for Teachers/ CLIL is intended for non-native English Teachers who wish to refresh their own language skills and, at the same time examine different teaching approaches and methods. It provides opportunities to discuss and share ideas with colleagues from Europe and beyond.

The sessions involve a variety of workshops and communicative lecture formats, with 10 hours per week devoted to language usage, awareness and development.

A further 10 hours is dedicated to the exploration of eclectic, pragmatic methodologies. We can also offer a focused primary / secondary course if numbers permit.

» THE LANGUAGE COMPONENT INCLUDES

- Advanced Language Usage
- Lexical Development
- Integrated Skills
- Varieties of English
- Register and Idioms
- Pronunciation, Stress and Intonation

» THE METHODOLOGY COMPONENT INCLUDES

- Task Based Learning
- Authentic Materials
- Exploiting the Course Book
- Music and Song
- Drama in the Classroom
- The Lexical Approach
- Materials Development
- Motivating the Younger Learner



CES Dublin, CES Leeds and CES Edinburgh are CELTA training centres. Contact us for further details.

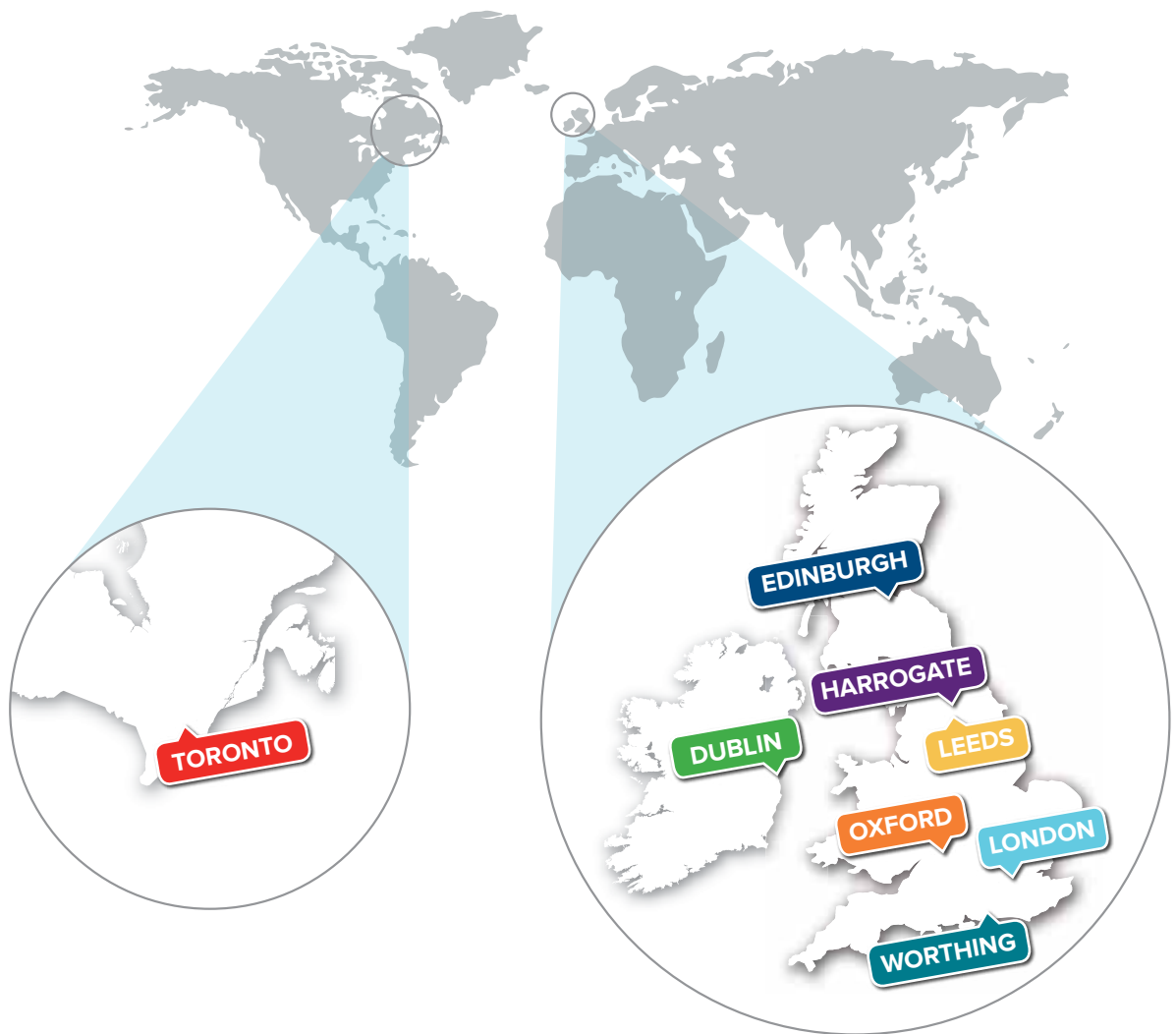
» SAMPLE AFTERNOON LECTURES/WORKSHOPS

- The Political and Historical Background of Ireland (Ireland)/ British Cultural Issues and Politics (UK)
- Anglo/Irish Literature (Ireland) / English Literature (UK)
- CLIL (Content and Language Integrated Learning)
- British Food – A Revival
- British Popular Culture and The World
- Blended Learning
- Traditional Irish Music (Ireland only)
- The Irish language and Hiberno-English (Ireland only)

» TIMETABLE

LOCATION	TIME/DAY
UK:	09.30-13.00 Monday - Friday
	14.30-16.30 lectures and visits
IRELAND:	9.00-13.00 Monday-Friday
	14.00-16.30 lectures (two afternoons per week) and visits

* Not available in CES Oxford, CES Harrogate and CES Toronto



www.ces-schools.com

www.ieltsdublin.com

www.ieltsleeds.com



DUBLIN

31 Dame Street,
Dublin 2,
Ireland

+353 (0)1 671 4233
info@ces-schools.com

TORONTO

180 Bloor Street West,
Second Floor,
Toronto,
ON M5S 2V6
Canada

+1 416 968 1405
toronto@ces-schools.com

LONDON

Nelson House,
271 Kingston Road,
Wimbledon,
SW19 3NW
England

+44(0)20 8543 5150
london@ces-schools.com

EDINBURGH

54 Manor Place,
Edinburgh,
EH3 7EH
Scotland

+44(0)131 226 5004
edinburgh@ces-schools.com

OXFORD

67 High Street,
Wheatley,
Oxfordshire,
OX33 1XT
England

+44(0)1865 874786
oxford@ces-schools.com

LEEDS

9 Park Place,
Leeds,
LS1 2RU
England

+44 (0)113 2427171
leeds@ces-schools.com

WORTHING

12 Stoke
Abbott Road,
Worthing,
West Sussex,
BN11 1HE
England

+44 (0)1903 231330
worthing@ces-schools.com

HARROGATE

8a Royal Parade,
Harrogate,
HG1 2SZ
England

+44 (0)1423 531969
harrogate@ces-schools.com

